

LEA Name : Union SD
Address : 354 Baker Street, Ste 2
Rimersburg , PA 16248

County : Clarion
AUN Number : 106169003
LEA Type : SD

Annual Financial Report Accuracy Certification Statement

For Fiscal Year Ending
6/30/2018

Pennsylvania Department of Education
&
Office of Comptroller Operations

PDE-2056: Intermediate Unit
PDE-2057: School District, AVTS/CTC, Charter School,
and Special Program Jointure


CERTIFICATION: By signing this page I agree that the electronic data submitted is a complete and accurate statement of the financial operations and status of the local education agency for the fiscal year. It has been prepared in accordance with generally accepted accounting principles and established Commonwealth of PA reporting guidelines.



Chief School Administrator Signature



Date



Board Secretary Signature



Date

Megan Hepler

Contact Person

heplerml@unionsd.net

Contact Person E-mail Address

(814)473-6311

Ext :0

Contact Person Telephone Number

(814)473-8201

Contact Person Fax Number

Audit Certification
Annual Financial Report:
For Fiscal Year Ending **6/30/2018**
(Pursuant to PA School Code Section 218(b))

LEA Name : Union SD
AUN Number : 106169003
County : Clarion

Audit Certification Due: 12/31/2018

This certification is applicable to the Annual Financial Report data submitted through the Consolidated Financial Reporting System on: _____
Date

Auditing Firm:

Auditor Contact Name:

Auditor Phone:

Auditor E-mail:

CERTIFICATION: By signing this page I agree that the financial statements of the school have been properly audited as noted above pursuant to Article XXIV, and in the auditor's professional opinion, the Annual Financial Report (PDE-2057) submitted on the date referenced is materially consistent with the audited financial statements.

Chief School Administrator

Board Secretary

Signature

Date

Signature

Date

Megan Hepler

Contact Person

heplerm1@unionsd.net

Contact Person E-mail Address

(814)473-6311

Ext :0

Contact Person Telephone Number

(814)473-8201

Contact Person Fax Number

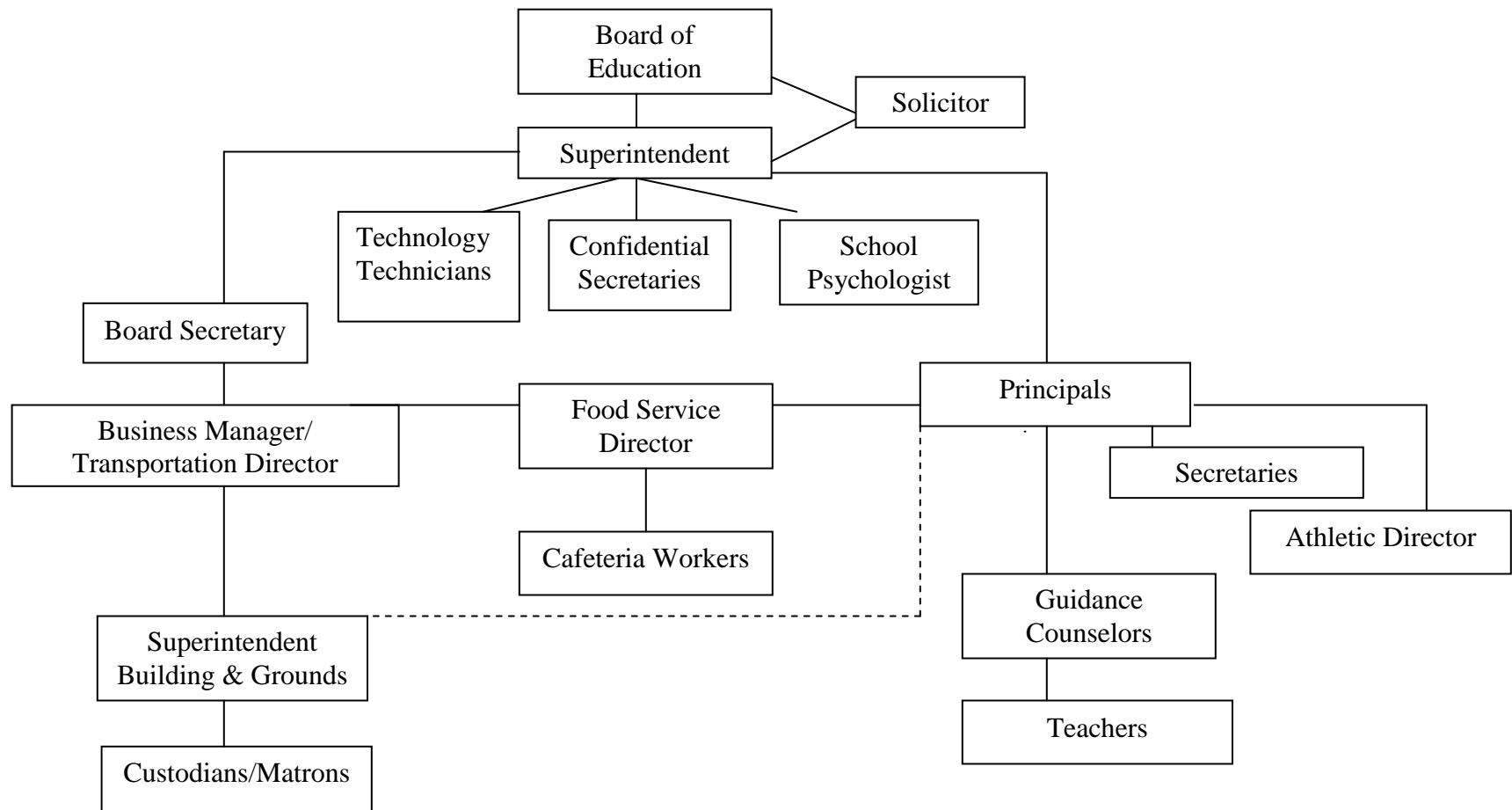
UNION SCHOOL DISTRICT

SECTION: LOCAL BOARD PROCEDURES

TITLE: ORGANIZATION CHART

ADOPTED: September 16, 1999

REVISED: February 16, 2006
May 3, 2018



<u>Val Number</u>	<u>Description</u>	<u>Justification</u>
41162	<p>Expenditure Detail, Salaries (Object 100) and Benefits (Object 200 series): Amounts must be entered for both Salaries and Benefits.</p> <p>Please verify following fund and function codes: Fund 10 Function 2350; Fund 10 Function 2850;</p>	<p>Fund 10 Function 2350: Based on contractual agreement. Fund 10 Function 2850: Based on annual federal stipend approved by the school board.</p>

Amounts Expressed in Whole Dollars

<u>General Fund</u>	<u>Public Purpose Trust</u>	<u>Other Compt Approved</u>	<u>Athletic / Activity</u>	<u>Capital Reserve (690.</u>
<u>(10)</u>	<u>(27)</u>	<u>(28)</u>	<u>(29)</u>	<u>1850)</u>
				<u>(31)</u>

Assets And Deferred Outflows Of Resources

Assets

0100 Cash and Cash Equivalents	239,295
0110 Investments	7,775,455
0120 Taxes Receivable	195,052
0130 Due From Other Funds	76,729
0141 Due From Other Governments	
0142 State Revenue Receivable	
0143 Federal Revenue Receivable	
0145 Other Intergovernmental Revenue Receivable	
0146 Due from Primary Government	
0147 Due from Component Unit	
0150 Other Receivables	
0170 Inventories	32,000
0180 Prepaid Expenses (Expenditures)	
0190 Other Current Assets	

Total Assets	\$8,318,531
---------------------	--------------------

0910 Deferred Outflows of Resources

Total Assets And Deferred Outflows Of Resources	\$8,318,531
--	--------------------

Amounts Expressed in Whole Dollars

	<u>Capital Reserve (1431)</u> <u>(32)</u>	<u>Other Capital Projects</u> <u>Fund</u> <u>(39)</u>	<u>Debt Service</u> <u>(40)</u>	<u>Permanent</u> <u>(90)</u>	<u>Total Governmental</u> <u>Funds</u>
Assets And Deferred Outflows Of Resources					
Assets					
0100 Cash and Cash Equivalents		222,486			461,781
0110 Investments					7,775,455
0120 Taxes Receivable					195,052
0130 Due From Other Funds					76,729
0141 Due From Other Governments					
0142 State Revenue Receivable					
0143 Federal Revenue Receivable					
0145 Other Intergovernmental Revenue Receivable					
0146 Due from Primary Government					
0147 Due from Component Unit					
0150 Other Receivables					
0170 Inventories					32,000
0180 Prepaid Expenses (Expenditures)					
0190 Other Current Assets					
Total Assets		\$222,486			\$8,541,017
0910 Deferred Outflows of Resources					
Total Assets And Deferred Outflows Of Resources		\$222,486			\$8,541,017

Amounts Expressed in Whole Dollars

<u>General Fund</u>	<u>Public Purpose Trust</u>	<u>Other Compt Approved</u>	<u>Athletic / Activity</u>	<u>Capital Reserve (690.</u>
<u>(10)</u>	<u>(27)</u>	<u>(28)</u>	<u>(29)</u>	<u>1850)</u>
				<u>(31)</u>

Liabilities And Deferred Inflows Of Resources And Fund Balances

Liabilities

0400 Due to Other Funds	
0411 Due to Other Governments	
0412 Due to Primary Government	
0413 Due to Component Unit	
0420 Accounts Payable	4,450
0430 Contracts Payable	
0440 Current Portion of Long-Term Debt	
0450 Short-Term Payables	
0461 Accrued Salaries and Benefits	
0462 Payroll Deductions and Withholding	
0480 Unearned Revenues	
0490 Other Current Liabilities	1,061,649

Total Liabilities \$1,066,099

0950 Deferred Inflows of Resources	195,052
------------------------------------	---------

Fund Balances

0810 Nonspendable Fund Balance	32,000
0820 Restricted Fund Balance	
0830 Committed Fund Balance	
0840 Assigned Fund Balance	4,400,000
0850 Unassigned Fund Balance	2,625,380

Total Fund Balances \$7,057,380

Total Liabilities, Deferred Inflows Of Resources And Fund Balances \$8,318,531

Amounts Expressed in Whole Dollars

	<u>Capital Reserve (1431)</u> <u>(32)</u>	<u>Other Capital Projects</u> <u>Fund</u> <u>(39)</u>	<u>Debt Service</u> <u>(40)</u>	<u>Permanent</u> <u>(90)</u>	<u>Total Governmental</u> <u>Funds</u>
Liabilities And Deferred Inflows Of Resources And Fund Balances					
Liabilities					
0400 Due to Other Funds					
0411 Due to Other Governments					
0412 Due to Primary Government					
0413 Due to Component Unit					
0420 Accounts Payable					4,450
0430 Contracts Payable					
0440 Current Portion of Long-Term Debt					
0450 Short-Term Payables					
0461 Accrued Salaries and Benefits					
0462 Payroll Deductions and Withholding					
0480 Unearned Revenues					
0490 Other Current Liabilities					1,061,649
Total Liabilities					\$1,066,099
0950 Deferred Inflows of Resources					195,052
Fund Balances					
0810 Nonspendable Fund Balance					32,000
0820 Restricted Fund Balance					
0830 Committed Fund Balance					
0840 Assigned Fund Balance		222,486			4,622,486
0850 Unassigned Fund Balance					2,625,380
Total Fund Balances		\$222,486			\$7,279,866
Total Liabilities, Deferred Inflows Of Resources And Fund Balances		\$222,486			\$8,541,017

Amounts Expressed in Whole Dollars	<u>General Fund</u> <u>(10)</u>	<u>Public Purpose Trust</u> <u>(27)</u>	<u>Other Compt Approved</u> <u>(28)</u>	<u>Athletic / Activity</u> <u>(29)</u>	<u>Capital Reserve (690.</u> <u>1850)</u> <u>(31)</u>
Revenues					
6000 Revenue from Local Sources	2,229,313				
7000 Revenue from State Sources	8,295,222				
8000 Revenue from Federal Sources	236,753				
Total Revenues	\$10,761,288				
Expenditures					
1000 Instruction	6,557,569				
2000 Support Services	3,944,577				
3000 Operation of Non-Instructional Services	280,274				
4000 Facilities Acquisition, Construction and Improvement Services					
5110 Debt Service	339,264				
5130 Refund of Prior Year Revenues / Receipts					
Total Expenditures	\$11,121,684				
Excess (Deficiency) Of Revenues Over Expenditures	(\$360,396)				
Other Financing Sources (Uses)					
9110 Face Value of Bonds Issued					
9120 Proceeds from Refunding of Bonds					
9130 Bond Premiums					
9200 Proceeds from Extended-Term Financing					
9300 Interfund Transfers - IN					
9400 Sale of or Compensation for Loss of Fixed Assets					
9710 Transfers from Component Units					
9720 Transfers from Primary Governments					
9910 Other Financing Sources Not Listed in the 9000 Series					
9990 Insurance Recoveries					
5120 Debt Service – Refunded Bonds					
5150 Bond Discounts					
5200 Interfund Transfers – Out	100,300				
5300 Transfers Out to Component Units/Primary Governments					
Total Other Financing Sources (Uses)	(\$100,300)				

Amounts Expressed in Whole Dollars	<u>Capital Reserve (1431)</u> <u>(32)</u>	<u>Other Capital Projects</u> <u>Fund</u> <u>(39)</u>	<u>Debt Service</u> <u>(40)</u>	<u>Permanent</u> <u>(90)</u>	<u>Total Governmental</u> <u>Funds</u>
Revenues					
6000 Revenue from Local Sources		1,847			2,231,160
7000 Revenue from State Sources					8,295,222
8000 Revenue from Federal Sources					236,753
Total Revenues		\$1,847			\$10,763,135
Expenditures					
1000 Instruction					6,557,569
2000 Support Services		7,837			3,952,414
3000 Operation of Non-Instructional Services					280,274
4000 Facilities Acquisition, Construction and Improvement Services					
5110 Debt Service					339,264
5130 Refund of Prior Year Revenues / Receipts					
Total Expenditures		\$7,837			\$11,129,521
Excess (Deficiency) Of Revenues Over Expenditures		(\$5,990)			(\$366,386)
Other Financing Sources (Uses)					
9110 Face Value of Bonds Issued					
9120 Proceeds from Refunding of Bonds					
9130 Bond Premiums					
9200 Proceeds from Extended-Term Financing					
9300 Interfund Transfers - IN					
9400 Sale of or Compensation for Loss of Fixed Assets					
9710 Transfers from Component Units					
9720 Transfers from Primary Governments					
9910 Other Financing Sources Not Listed in the 9000 Series					
9990 Insurance Recoveries					
5120 Debt Service – Refunded Bonds					
5150 Bond Discounts					
5200 Interfund Transfers – Out					100,300
5300 Transfers Out to Component Units/Primary Governments					
Total Other Financing Sources (Uses)					(\$100,300)

Amounts Expressed in Whole Dollars	<u>General Fund</u> <u>(10)</u>	<u>Public Purpose Trust</u> <u>(27)</u>	<u>Other Compt Approved</u> <u>(28)</u>	<u>Athletic / Activity</u> <u>(29)</u>	<u>Capital Reserve</u> <u>(690.</u> <u>1850)</u> <u>(31)</u>
Special And Extraordinary Items					
9920 Special Items – Gains					
9930 Extraordinary Items – Gains					
5520 Special Items – Losses					
5530 Extraordinary Items – Losses					
Net Change In Fund Balances	(\$460,696)				
Fund Balance					
0001 Fund Balance - Beginning of Fiscal Year	7,518,077				
Fund Balance - End Of Year	\$7,057,381				

Amounts Expressed in Whole Dollars	<u>Capital Reserve (1431)</u> <u>(32)</u>	<u>Other Capital Projects</u> <u>Fund</u> <u>(39)</u>	<u>Debt Service</u> <u>(40)</u>	<u>Permanent</u> <u>(90)</u>	<u>Total Governmental</u> <u>Funds</u>
Special And Extraordinary Items					
9920 Special Items – Gains					
9930 Extraordinary Items – Gains					
5520 Special Items – Losses					
5530 Extraordinary Items – Losses					
Net Change In Fund Balances		(\$5,990)			(\$466,686)
Fund Balance					
0001 Fund Balance - Beginning of Fiscal Year		228,475			7,746,552
Fund Balance - End Of Year		\$222,485			\$7,279,866

Amounts Expressed in Whole Dollars	<u>Food Service</u> <u>(51)</u>	<u>Child Care</u> <u>Operations</u> <u>(52)</u>	<u>Other Enterprise</u> <u>(58)</u>	<u>TOTAL</u>	<u>Internal Service</u> <u>(60)</u>
Assets And Deferred Outflows Of Resources					
Current Assets					
0100 Cash and Cash Equivalents	15,521			15,521	
0110 Investments					
0130 Due From Other Funds					
0141 Due From Other Governments					
0142 State Revenue Receivable					
0143 Federal Revenue Receivable					
0146 Due from Primary Government					
0147 Due from Component Unit					
0150 Other Receivables					
0170 Inventories	18,977			18,977	
0180 Prepaid Expenses (Expenditures)					
0190 Other Current Assets					
Total Current Assets	\$34,498			\$34,498	
Noncurrent Assets					
0211 Land					
0212 Site Improvements (Net)					
0220 Buildings and Building Improvements (Net)					
0230 Machinery, Equipment and Furniture (Net)	29,936			29,936	
0250 Construction in Progress					
0260 Long Term Prepayments					
0290 Other Noncurrent Assets					
Total Noncurrent Assets	\$29,936			\$29,936	
0910 Deferred Outflows of Resources					
Total Assets And Deferred Outflows Of Resources	\$64,434			\$64,434	

Amounts Expressed in Whole Dollars	<u>Food Service</u> <u>(51)</u>	<u>Child Care</u> <u>Operations</u> <u>(52)</u>	<u>Other Enterprise</u> <u>(58)</u>	<u>TOTAL</u>	<u>Internal Service</u> <u>(60)</u>
Liabilities And Deferred Inflows Of Resources And Net Position					
Current Liabilities					
0400 Due to Other Funds					
0411 Due to Other Governments					
0413 Due to Component Unit					
0420 Accounts Payable	78,138			78,138	
0430 Contracts Payable					
0440 Current Portion of Long-Term Debt					
0450 Short-Term Payables					
0461 Accrued Salaries and Benefits					
0462 Payroll Deductions and Withholding					
0480 Unearned Revenues					
0490 Other Current Liabilities					
Total Current Liabilities	\$78,138			\$78,138	
Noncurrent Liabilities					
0510 Bonds Payable					
0520 Extended-Term Financing Agreements Payable					
0530 Lease-Purchase Obligations					
0540 Accumulated Compensated Absences					
0550 Authority Lease Obligations					
0560 Other Post-Employment Benefits (OPEB)					
0570 Net Pension Liability					
0599 Other Noncurrent Liabilities					
Total Noncurrent Liabilities					
Total Liabilities	\$78,138			\$78,138	
0950 Deferred Inflows of Resources					
Net Position					
0791 Net Investment in Capital Assets	29,936			29,936	
0008 Restricted Net Position (0792 – 0798)					
0799 Unrestricted Net Position	(43,640)			(43,640)	
Total Net Position	(\$13,704)			(\$13,704)	
Total Liabilities And Deferred Inflows Of Resources And Net Position	\$64,434			\$64,434	

Amounts Expressed in Whole Dollars	<u>Food Service</u> <u>(51)</u>	<u>Child Care Operations</u> <u>(52)</u>	<u>Other Enterprise</u> <u>(58)</u>	<u>TOTAL</u>	<u>Internal Service</u> <u>(60)</u>
Operating Revenues					
6600 Food Service Revenue	126,023			126,023	
0071 Charges for Services					
0072 Other Operating Revenue					
Total Operating Revenues	\$126,023			\$126,023	
Operating Expenses					
100 Personnel Services – Salaries	180,951			180,951	
200 Personnel Services – Employee Benefits	123,897			123,897	
300 Purchased Professional and Technical Services					
400 Purchased Property Services	10,123			10,123	
500 Other Purchased Services	4,404			4,404	
600 Supplies	153,128			153,128	
740 Depreciation	6,704			6,704	
810 Dues and Fees					
890 Miscellaneous Expenditures					
Total Operating Expenses	\$479,207			\$479,207	
Operating Income (Loss)	(\$353,184)			(\$353,184)	
Non Operating Revenues (Expenses)					
6500 Earnings on Investments	656			656	
6920 Contributions and Donations from Private Sources					
6930 Gains or Losses on Sale of Fixed Assets					
6991 Refunds of a Prior Year Expenditure					
7000 Revenue from State Sources	12,827			12,827	
8000 Revenue from Federal Sources	206,588			206,588	
820 Claims and Judgments Against the LEA					
830 Interest					
TOTAL Non Operating Revenues (Expenses)	\$220,071			\$220,071	
Income (Loss) Before Contributions And Transfers	(\$133,113)			(\$133,113)	

Amounts Expressed in Whole Dollars	<u>Food Service</u> <u>(51)</u>	<u>Child Care Operations</u> <u>(52)</u>	<u>Other Enterprise</u> <u>(58)</u>	<u>TOTAL</u>	<u>Internal Service</u> <u>(60)</u>
Contributions, Transfers, and Special and Extraordinary Items					
5200 Interfund Transfers – Out					
5300 Transfers Out to Component Units/Primary Governments					
5520 Special Items – Losses					
5530 Extraordinary Items – Losses					
9300 Interfund Transfers - IN	100,300			100,300	
9500 Capital Contributions					
9700 Transfers IN From Component Units/Primary Governments					
9920 Special Items – Gains					
9930 Extraordinary Items – Gains					
Change In Net Position	(\$32,813)			(\$32,813)	
0002 Net Position - Beginning of Fiscal Year	19,109			19,109	
0003 Accounting Changes / Residual Equity Transfers					
Net Position - End Of Year	(\$13,704)			(\$13,704)	

Amounts Expressed in Whole Dollars	<u>Food Service</u> <u>(51)</u>	<u>Child Care Operations</u> <u>(52)</u>	<u>Other Enterprise</u> <u>(58)</u>	<u>TOTAL</u>	<u>Internal Service(60)</u>
Cash Flows From Operating Activities					
0011 Cash Receipts From Users	126,023			126,023	
0012 Cash Receipts From Assessments Made to Other Funds					
0013 Cash Receipts From Earnings on Investments					
0014 Cash Receipts From Other Operating Revenue					
0015 Cash Payments To Employees For Services	304,849			304,849	
0016 Cash Payments For Insurance Claims					
0017 Cash Payments To Suppliers For Goods and Services	170,267			170,267	
0018 Cash Payments For Other Operating Expenses					
Net Cash Provided By (Used For) Operating Activities	(\$349,093)			(\$349,093)	
Cash Flows From Non-Capital Financing Activities					
0021 Receipts From Local Sources - 6000					
0022 Receipts From State Sources - 7000	12,827			12,827	
0023 Receipts From Federal Sources -8000	206,588			206,588	
0024 Notes and Loans Received (Repaid)					
0025 Interest Paid on Notes/Loans - 5100-830					
0026 Operating Transfers In (Out)/Residual Equity Trans					
0027 Operating Transfers In (Out) Primary Government / Comp Unit	100,300			100,300	
0028 Receipts From Refund of Prior Year Expenditures - 6991					
0029 Special and Extraordinary Gains (losses)					
0030 Receipts from Insurance Recoveries -9990					
Net Cash Prov By (Used for) Non-Capital Financing Activities	\$319,715			\$319,715	
Cash Flows From Capital and Related Financing Activities					
0031 Payments For Fac Acq, Const, and Imp - 4000	(1,914)			(1,914)	
0032 Gain / (Loss) on Sale of Fixed Assets - 6930					
0033 Proceeds From Extended Term Financing - 9200					
0034 Principal Paid on Financing Agreements					
0035 Interest Paid on Financing Agreements - 5100-830					
0036 (Inc) Dec in Contributed Capital					
Net Cash Prov By (Used for) Capital and Related Financing Activities	(\$1,914)			(\$1,914)	
Cash Flows From Investing Activities					
0041 Earnings on Investments - 6500	656			656	
0042 Purchase of Inv Securities / Deposits to Inv Pools					
0043 Receipts From Investment Pool Withdrawals					
0044 Proceeds from Sale and Maturity of Inv Securities					

LEA : 106169003 Union SD

Printed 11/27/2018 8:26:30 AM

0045 Loans Received (Paid)

Net Cash Prov By (Used for) Investing Activities	\$656	\$656
---	--------------	--------------

	<u>Food Service</u> <u>(51)</u>	<u>Child Care Operations</u> <u>(52)</u>	<u>Other Enterprise</u> <u>(58)</u>	<u>TOTAL</u>	<u>Internal Service</u> <u>(60)</u>
Net Increase (Decrease) in Cash Flows	(30,636)			(30,636)	
0004 Cash and Cash Equivalents Beginning of Year	46,156			46,156	
Cash and Cash Equivalents at Year End	\$15,520			\$15,520	

Reconciliation of Operating Income (Loss) To Net Cash Provided by (Used For) Operating Activities

0005 Operating Income (Loss) per REP	(353,184)			(353,184)	
Adjustments					
0051 Depreciation and Net Amortization	6,704			6,704	
0052 Provision for Uncollectible Accounts					
0053 Other Adjustments					
Effect of Changes in Assets, Liabilities, Deferred Outflows and Deferred Inflows					
0054 (Inc) Dec In Accounts Receivable (0120-0150)					
0055 Advances to Other Funds (0160)					
0056 (Inc) Dec in Inventories (0170)	(2,612)			(2,612)	
0057 (Inc) Dec in Prepaid Expenses (0180)					
0058 (Inc) Dec in Other Current or Noncurrent Assets					
0064 Deferred Outflows (0910)					
0059 Inc (Dec) in Accounts Payable (0400-0450)					
0060 Inc (Dec) in Accrued Salaries/Benefits (0461)					
0065 Inc (Dec) in Net Pension Liabilities (0570)					
0066 Inc (Dec) in Other Postemp Benefit Oblig (0560)					
0061 Inc (Dec) in Payroll Deductions/Withholding (0462)					
0062 Inc (Dec) in Unearned Revenue (0480)					
0063 Inc (Dec) in Other Current or Noncurrent Liabilities					
0067 Deferred Inflows (0950)					
Total Adjustments	\$4,092			\$4,092	
Cash Provided By (Used for) Total	(\$349,092)			(\$349,092)	

COMBINED STATEMENT OF CASH FLOWS
SCHEDULE OF NONCASH INVESTING, CAPITAL, AND FINANCING ACTIVITIES

Explanation of Transaction and Balance Sheet Effect	Amount
Total	

LEA : 106169003 Union SD

Printed 11/27/2018 8:26:31 AM

Amounts Expressed in Whole Dollars

Private Purpose Trust
(71)

Investment Trust
(72)

Pension Trust
(73)

Activity
(81)

Assets And Deferred Outflows Of Resources

Assets				
0100 Cash and Cash Equivalents		51,478		
0110 Investments		150,554		
0130 Due From Other Funds				
0147 Due from Component Unit				
0150 Other Receivables				
0170 Inventories				
0180 Prepaid Expenses (Expenditures)				
0190 Other Current Assets				
0220 Buildings and Building Improvements (Net)				
0230 Machinery, Equipment and Furniture (Net)				
Total Assets		\$202,032		
0910 Deferred Outflows of Resources				
Total Assets And Deferred Outflows Of Resources		\$202,032		

LEA : 106169003 Union SD

Printed 11/27/2018 8:26:31 AM

Amounts Expressed in Whole Dollars

	<u>Other Agency</u> <u>(89)</u>	<u>Discrete Component Units</u> <u>(98)</u>	<u>Discrete Component Units</u> <u>(99)</u>	<u>Total Fiduciary Funds</u>
Assets And Deferred Outflows Of Resources				
Assets				
0100 Cash and Cash Equivalents				51,478
0110 Investments				150,554
0130 Due From Other Funds				
0147 Due from Component Unit				
0150 Other Receivables				
0170 Inventories				
0180 Prepaid Expenses (Expenditures)				
0190 Other Current Assets				
0220 Buildings and Building Improvements (Net)				
0230 Machinery, Equipment and Furniture (Net)				
Total Assets				\$202,032
0910 Deferred Outflows of Resources				
Total Assets And Deferred Outflows Of Resources				\$202,032

LEA : 106169003 Union SD

Printed 11/27/2018 8:26:31 AM

Amounts Expressed in Whole Dollars	<u>Private Purpose Trust</u> (71)	<u>Investment Trust</u> (72)	<u>Pension Trust</u> (73)	<u>Activity</u> (81)
Liabilities, Deferred Inflows Of Resources And Net Position				
Liabilities				
0400 Due to Other Funds				
0411 Due to Other Governments				
0412 Due to Primary Government				
0413 Due to Component Unit				
0420 Accounts Payable				
0430 Contracts Payable				
0450 Short-Term Payables				
0461 Accrued Salaries and Benefits				
0462 Payroll Deductions and Withholding				
0480 Unearned Revenues				
0490 Other Current Liabilities		51,478		
Total Liabilities		\$51,478		
0950 Deferred Inflows of Resources				
Net Position				
0791 Net Investment in Capital Assets				
0009 Restricted Net Position (0792 – 0798)		150,554		
0799 Unrestricted Net Position				
Total Net Position		\$150,554		
Total Liabilities, Deferred Inflows Of Resources And Net Position		\$202,032		

LEA : 106169003 Union SD

Printed 11/27/2018 8:26:31 AM

Amounts Expressed in Whole Dollars	<u>Other Agency</u> (89)	<u>Discrete Component Units</u> (98)	<u>Discrete Component Units</u> (99)	<u>Total Fiduciary Funds</u>
Liabilities, Deferred Inflows Of Resources And Net Position				
Liabilities				
0400 Due to Other Funds				
0411 Due to Other Governments				
0412 Due to Primary Government				
0413 Due to Component Unit				
0420 Accounts Payable				
0430 Contracts Payable				
0450 Short-Term Payables				
0461 Accrued Salaries and Benefits				
0462 Payroll Deductions and Withholding				
0480 Unearned Revenues				
0490 Other Current Liabilities				51,478
Total Liabilities				\$51,478
0950 Deferred Inflows of Resources				
Net Position				
0791 Net Investment in Capital Assets				
0009 Restricted Net Position (0792 – 0798)				150,554
0799 Unrestricted Net Position				
Total Net Position				\$150,554
Total Liabilities, Deferred Inflows Of Resources And Net Position				\$202,032

Amounts Expressed in Whole Dollars	<u>Private Purpose Trust</u> <u>(71)</u>	<u>Investment Trust</u> <u>(72)</u>	<u>Pension Trust</u> <u>(73)</u>	<u>Discrete Component</u> <u>Units</u> <u>(98)</u>	<u>Discrete Component</u> <u>Units</u> <u>(99)</u>	<u>Total Fiduciary</u> <u>Funds</u>
Additions						
0091 Gifts and Contributions	2,506					2,506
0092 Other Additions	5,331					5,331
Deductions						
0093 Scholarships Awarded	6,556					6,556
0094 Other Deductions						
Change In Net Position	\$1,281					\$1,281
0006 Net Position – Beginning of Fiscal Year	149,273					149,273
0007 Net Position Held in Trust for Pension Benefits						
Net Position - End of Fiscal Year	\$150,554					\$150,554

	<u>Revenue Reported In Current Year</u>	<u>Current Year Tax Accrual</u>	<u>Prior Year Tax Accrual</u>	<u>Taxes Collected In Current Year</u>
<u>Revenue from Local Sources</u>				
6111 Current Real Estate Taxes	1,435,910.29			1,435,910.29
6113 Public Utility Realty Taxes	2,339.62			2,339.62
6114 Payments in Lieu of Current Taxes - State / Local	4,511.69			4,511.69
6120 Current Per Capita Taxes, Section 679	9,019.10			9,019.10
6141 Current Act 511 Per Capita Taxes	8,756.60			8,756.60
6143 Current Act 511 Local Services Taxes	6,392.46			6,392.46
6151 Current Act 511 Earned Income Taxes	318,243.80			318,243.80
6152 Current Act 511 Occupation Taxes	82,328.35			82,328.35
6153 Current Act 511 Real Estate Transfer Taxes	28,443.25			28,443.25
6411 Delinquent Real Estate Taxes	142,239.15			142,239.15
6420 Delinquent Per Capita Taxes, Section 679	1,949.70			1,949.70
6440 Delinquent Local Enabling Taxes - Flat Rate Assessments	14,423.17			14,423.17
6500 Earnings on Investments	85,147.88			
6700 Revenues from LEA Activities	14,001.00			
6821 State Revenue Received from Other Pennsylvania Public LEAs	31,906.66			
6832 Federal IDEA Revenue Received as Pass Through	3,310.00			
6910 Rentals	11,561.79			
6920 Contributions and Donations from Private Sources	650.18			
6942 Summer School Tuition	9,896.64			
6999 Other Revenues Not Specified Above	18,281.72			
TOTAL Revenue from Local Sources	\$2,229,313.05			\$2,054,557.18

**Revenue Reported
In Current Year**

Revenue from State Sources

7110 Basic Education Funding	5,649,471.09		
7240 Driver Education - Student	455.00		
7271 Special Education funds for School-Aged Pupils	577,625.97		
7311 Pupil Transportation Subsidy	412,291.50		
7330 Health Services (Medical, Dental, Nurse, Act 25)	10,146.28		
7340 State Property Tax Reduction Allocation	140,821.04		
7505 Ready to Learn Block Grant	157,782.00		
7810 State Share of Social Security and Medicare Taxes	255,926.04		
7820 State Share of Retirement Contributions	1,090,702.95		
TOTAL Revenue from State Sources	\$8,295,221.87		

**Revenue Reported
In Current Year**

Revenue from Federal Sources

8514 NCLB, Title I - Improving the Academic Achievement of the Disadvantaged	168,383.89		
8515 NCLB, Title II - Preparing, Training and Recruiting High Quality Teachers and Principals	26,411.78		
8517 NCLB, Title IV - 21St Century Schools	10,000.00		
8810 School-Based Access Medicaid Reimbursement Program (SBAP) Reimbursements (Access)	30,729.02		
8820 Medical Assistance Reimbursement for Administrative Claiming (Quarterly) Program	1,227.87		
TOTAL Revenue from Federal Sources	\$236,752.56		
TOTAL FROM ALL SOURCES	\$10,761,287.48		\$2,054,557.18

Revenue from Local Sources	2,229,313.05
Revenue from State Sources	8,295,221.87
Revenue from Federal Sources	236,752.56
Other Financing Sources	
TOTAL FROM ALL SOURCES	\$10,761,287.48

General Fund (10)

	<u>Total</u>
1000 Instruction	
100 Personnel Services – Salaries	
100 Personnel Services – Salaries	3,058,162.39
Total Personnel Services – Salaries	\$3,058,162.39
200 Personnel Services – Employee Benefits	
210 Group Insurance – Contracted Provider	957,931.79
220 Social Security Contributions	233,947.81
230 PSERS Retirement Contributions	993,168.15
250 Unemployment Compensation	4,053.54
260 Workers' Compensation	21,469.98
Total Personnel Services – Employee Benefits	\$2,210,571.27
300 Purchased Professional and Technical Services	
322 Professional Educational Services – Ius	153,579.20
329 Professional Educational Services – Other	106,127.45
Total Purchased Professional and Technical Services	\$259,706.65
400 Purchased Property Services	
430 Repairs and Maintenance Services	15,312.08
Total Purchased Property Services	\$15,312.08
500 Other Purchased Services	
510 Student Transportation Services	6,285.05
530 Communications	601.00
561 Tuition To Other School Districts Within the State	5,704.20
562 Tuition To Pennsylvania Charter Schools	397,427.66
564 Tuition To Career and Technology Centers	228,838.00
568 Tuition To Private Residential Rehabilitative Institutions (PRRI) [In-State] and Detention Centers	14,753.93
569 Tuition – Other	175,363.42
580 Travel	12,894.34
Total Other Purchased Services	\$841,867.60
600 Supplies	
610 General Supplies	116,867.00
620 Energy	445.50
640 Books and Periodicals	52,638.16
Total Supplies	\$169,950.66
800 Other Objects	
810 Dues and Fees	1,998.50
Total Other Objects	\$1,998.50
Total 1000 Instruction	\$6,557,569.15

General Fund (10)

1100 Regular Programs – Elementary / Secondary	<u>Elementary</u>	<u>Secondary</u>	<u>Federal</u>	<u>Total</u>
100 Personnel Services – Salaries				
100 Personnel Services – Salaries	1,334,022.55	1,132,101.52	105,084.42	2,571,208.49
Total Personnel Services – Salaries	\$1,334,022.55	\$1,132,101.52	\$105,084.42	\$2,571,208.49
200 Personnel Services – Employee Benefits				
210 Group Insurance – Contracted Provider	419,422.49	371,851.32	26,663.83	817,937.64
220 Social Security Contributions	102,052.16	86,605.56	8,039.01	196,696.73
230 PSERS Retirement Contributions	431,961.19	369,600.22	34,226.02	835,787.43
250 Unemployment Compensation	3,471.75	242.02	195.30	3,909.07
260 Workers' Compensation	9,335.07	7,765.65	693.24	17,793.96
Total Personnel Services – Employee Benefits	\$966,242.66	\$836,064.77	\$69,817.40	\$1,872,124.83
300 Purchased Professional and Technical Services				
329 Professional Educational Services – Other	34,098.70	51,901.52		86,000.22
Total Purchased Professional and Technical Services	\$34,098.70	\$51,901.52		\$86,000.22
400 Purchased Property Services				
430 Repairs and Maintenance Services	7,825.31	7,486.77		15,312.08
Total Purchased Property Services	\$7,825.31	\$7,486.77		\$15,312.08
500 Other Purchased Services				
510 Student Transportation Services	928.54	1,070.05		1,998.59
530 Communications		601.00		601.00
561 Tuition To Other School Districts Within the State		5,704.20		5,704.20
562 Tuition To Pennsylvania Charter Schools	73,136.27	212,734.32		285,870.59
569 Tuition – Other		8,786.01		8,786.01
580 Travel	5,868.97	881.80	5,581.19	12,331.96
Total Other Purchased Services	\$79,933.78	\$229,777.38	\$5,581.19	\$315,292.35
600 Supplies				
610 General Supplies	41,327.24	59,930.87	670.50	101,928.61
640 Books and Periodicals	25,965.68	16,495.80	6,030.79	48,492.27
Total Supplies	\$67,292.92	\$76,426.67	\$6,701.29	\$150,420.88
800 Other Objects				
810 Dues and Fees	150.00	1,430.00		1,580.00
Total Other Objects	\$150.00	\$1,430.00		\$1,580.00
Total 1100 Regular Programs – Elementary / Secondary	\$2,489,565.92	\$2,335,188.63	\$187,184.30	\$5,011,938.85

General Fund (10)

1110 Regular Programs

	<u>Elementary</u>	<u>Secondary</u>	<u>Federal</u>	<u>Total</u>
100 Personnel Services – Salaries				
100 Personnel Services – Salaries	1,334,022.55	1,132,101.52		2,466,124.07
Total Personnel Services – Salaries	\$1,334,022.55	\$1,132,101.52		\$2,466,124.07
200 Personnel Services – Employee Benefits				
210 Group Insurance – Contracted Provider	419,422.49	371,851.32		791,273.81
220 Social Security Contributions	102,052.16	86,605.56		188,657.72
230 PSERS Retirement Contributions	431,961.19	369,600.22		801,561.41
250 Unemployment Compensation	3,471.75	242.02		3,713.77
260 Workers' Compensation	9,335.07	7,765.65		17,100.72
Total Personnel Services – Employee Benefits	\$966,242.66	\$836,064.77		\$1,802,307.43
300 Purchased Professional and Technical Services				
329 Professional Educational Services – Other	34,098.70	51,901.52		86,000.22
Total Purchased Professional and Technical Services	\$34,098.70	\$51,901.52		\$86,000.22
400 Purchased Property Services				
430 Repairs and Maintenance Services	7,825.31	7,486.77		15,312.08
Total Purchased Property Services	\$7,825.31	\$7,486.77		\$15,312.08
500 Other Purchased Services				
510 Student Transportation Services	928.54	1,070.05		1,998.59
530 Communications		601.00		601.00
561 Tuition To Other School Districts Within the State		5,704.20		5,704.20
562 Tuition To Pennsylvania Charter Schools	73,136.27	212,734.32		285,870.59
569 Tuition – Other		8,786.01		8,786.01
580 Travel	5,868.97	881.80		6,750.77
Total Other Purchased Services	\$79,933.78	\$229,777.38		\$309,711.16
600 Supplies				
610 General Supplies	41,327.24	59,930.87		101,258.11
640 Books and Periodicals	25,965.68	16,495.80		42,461.48
Total Supplies	\$67,292.92	\$76,426.67		\$143,719.59
800 Other Objects				
810 Dues and Fees	150.00	1,430.00		1,580.00
Total Other Objects	\$150.00	\$1,430.00		\$1,580.00
Total 1110 Regular Programs	\$2,489,565.92	\$2,335,188.63		\$4,824,754.55

General Fund (10)

1190 Federally-Funded Regular Programs

	<u>Elementary</u>	<u>Secondary</u>	<u>Federal</u>	<u>Total</u>
100 Personnel Services – Salaries				
100 Personnel Services – Salaries			105,084.42	105,084.42
Total Personnel Services – Salaries			\$105,084.42	\$105,084.42
200 Personnel Services – Employee Benefits				
210 Group Insurance – Contracted Provider			26,663.83	26,663.83
220 Social Security Contributions			8,039.01	8,039.01
230 PSERS Retirement Contributions			34,226.02	34,226.02
250 Unemployment Compensation			195.30	195.30
260 Workers' Compensation			693.24	693.24
Total Personnel Services – Employee Benefits			\$69,817.40	\$69,817.40
500 Other Purchased Services				
580 Travel			5,581.19	5,581.19
Total Other Purchased Services			\$5,581.19	\$5,581.19
600 Supplies				
610 General Supplies			670.50	670.50
640 Books and Periodicals			6,030.79	6,030.79
Total Supplies			\$6,701.29	\$6,701.29
Total 1190 Federally-Funded Regular Programs			\$187,184.30	\$187,184.30

General Fund (10)

1200 Special Programs – Elementary / Secondary	<u>Elementary</u>	<u>Secondary</u>	<u>Federal</u>	<u>Total</u>
100 Personnel Services – Salaries				
100 Personnel Services – Salaries	203,541.77	244,459.53		448,001.30
Total Personnel Services – Salaries	\$203,541.77	\$244,459.53		\$448,001.30
200 Personnel Services – Employee Benefits				
210 Group Insurance – Contracted Provider	43,105.91	86,241.37		129,347.28
220 Social Security Contributions	15,570.81	18,700.83		34,271.64
230 PSERS Retirement Contributions	65,023.25	79,672.56		144,695.81
250 Unemployment Compensation	64.13	60.86		124.99
260 Workers' Compensation	1,811.78	1,438.32		3,250.10
Total Personnel Services – Employee Benefits	\$125,575.88	\$186,113.94		\$311,689.82
300 Purchased Professional and Technical Services				
322 Professional Educational Services – lus	76,789.60	76,789.60		153,579.20
329 Professional Educational Services – Other	13,355.20	6,145.48		19,500.68
Total Purchased Professional and Technical Services	\$90,144.80	\$82,935.08		\$173,079.88
500 Other Purchased Services				
510 Student Transportation Services	764.58	1,091.88		1,856.46
562 Tuition To Pennsylvania Charter Schools	34,870.86	76,686.21		111,557.07
568 Tuition To Private Residential Rehabilitative Institutions (PRRI) [In-State] and Detention Centers		14,753.93		14,753.93
569 Tuition – Other	166,577.41			166,577.41
580 Travel	78.85	473.53	10.00	562.38
Total Other Purchased Services	\$202,291.70	\$93,005.55	\$10.00	\$295,307.25
600 Supplies				
610 General Supplies	2,610.06	3,991.78	8,239.05	14,840.89
640 Books and Periodicals		827.07		827.07
Total Supplies	\$2,610.06	\$4,818.85	\$8,239.05	\$15,667.96
800 Other Objects				
810 Dues and Fees		418.50		418.50
Total Other Objects		\$418.50		\$418.50
Total 1200 Special Programs – Elementary / Secondary	\$624,164.21	\$611,751.45	\$8,249.05	\$1,244,164.71

General Fund (10)

1210 Life Skills Support

	<u>Elementary</u>	<u>Secondary</u>	<u>Federal</u>	<u>Total</u>
100 Personnel Services – Salaries				
100 Personnel Services – Salaries		96,615.85		96,615.85
Total Personnel Services – Salaries		\$96,615.85		\$96,615.85
200 Personnel Services – Employee Benefits				
210 Group Insurance – Contracted Provider		21,034.50		21,034.50
220 Social Security Contributions		7,391.02		7,391.02
230 PSERS Retirement Contributions		31,519.96		31,519.96
250 Unemployment Compensation		30.01		30.01
260 Workers' Compensation		648.17		648.17
Total Personnel Services – Employee Benefits		\$60,623.66		\$60,623.66
300 Purchased Professional and Technical Services				
329 Professional Educational Services – Other		1,949.54		1,949.54
Total Purchased Professional and Technical Services		\$1,949.54		\$1,949.54
500 Other Purchased Services				
510 Student Transportation Services		378.40		378.40
580 Travel		473.53		473.53
Total Other Purchased Services		\$851.93		\$851.93
600 Supplies				
610 General Supplies	33.05	1,254.60	182.95	1,470.60
640 Books and Periodicals		827.07		827.07
Total Supplies	\$33.05	\$2,081.67	\$182.95	\$2,297.67
800 Other Objects				
810 Dues and Fees		418.50		418.50
Total Other Objects		\$418.50		\$418.50
Total 1210 Life Skills Support	\$33.05	\$162,541.15	\$182.95	\$162,757.15

General Fund (10)

1240 Academic Support

	<u>Elementary</u>	<u>Secondary</u>	<u>Federal</u>	<u>Total</u>
100 Personnel Services – Salaries				
100 Personnel Services – Salaries	203,541.77	147,843.68		351,385.45
Total Personnel Services – Salaries	\$203,541.77	\$147,843.68		\$351,385.45
200 Personnel Services – Employee Benefits				
210 Group Insurance – Contracted Provider	43,105.91	65,206.87		108,312.78
220 Social Security Contributions	15,570.81	11,309.81		26,880.62
230 PSERS Retirement Contributions	65,023.25	48,152.60		113,175.85
250 Unemployment Compensation	64.13	30.85		94.98
260 Workers' Compensation	1,811.78	790.15		2,601.93
Total Personnel Services – Employee Benefits	\$125,575.88	\$125,490.28		\$251,066.16
300 Purchased Professional and Technical Services				
322 Professional Educational Services – lus	76,789.60	76,789.60		153,579.20
329 Professional Educational Services – Other	13,355.20	4,195.94		17,551.14
Total Purchased Professional and Technical Services	\$90,144.80	\$80,985.54		\$171,130.34
500 Other Purchased Services				
510 Student Transportation Services	764.58	713.48		1,478.06
562 Tuition To Pennsylvania Charter Schools	34,870.86	76,686.21		111,557.07
568 Tuition To Private Residential Rehabilitative Institutions (PRRI) [In-State] and Detention Centers		14,753.93		14,753.93
569 Tuition – Other	166,577.41			166,577.41
580 Travel	78.85		10.00	88.85
Total Other Purchased Services	\$202,291.70	\$92,153.62	\$10.00	\$294,455.32
600 Supplies				
610 General Supplies	2,577.01	2,737.18	8,056.10	13,370.29
Total Supplies	\$2,577.01	\$2,737.18	\$8,056.10	\$13,370.29
Total 1240 Academic Support	\$624,131.16	\$449,210.30	\$8,066.10	\$1,081,407.56

General Fund (10)

1241 Learning Support – Public

	<u>Elementary</u>	<u>Secondary</u>	<u>Federal</u>	<u>Total</u>
100 Personnel Services – Salaries				
100 Personnel Services – Salaries	193,923.54	142,887.00		336,810.54
Total Personnel Services – Salaries	\$193,923.54	\$142,887.00		\$336,810.54
200 Personnel Services – Employee Benefits				
210 Group Insurance – Contracted Provider	38,899.17	63,103.50		102,002.67
220 Social Security Contributions	14,835.06	10,930.73		25,765.79
230 PSERS Retirement Contributions	61,890.56	46,538.31		108,428.87
250 Unemployment Compensation	62.72	30.17		92.89
260 Workers' Compensation	1,811.78	790.15		2,601.93
Total Personnel Services – Employee Benefits	\$117,499.29	\$121,392.86		\$238,892.15
300 Purchased Professional and Technical Services				
322 Professional Educational Services – lus	76,789.60	76,789.60		153,579.20
329 Professional Educational Services – Other	13,355.20	4,195.94		17,551.14
Total Purchased Professional and Technical Services	\$90,144.80	\$80,985.54		\$171,130.34
500 Other Purchased Services				
510 Student Transportation Services		31.58		31.58
562 Tuition To Pennsylvania Charter Schools	34,870.86	76,686.21		111,557.07
568 Tuition To Private Residential Rehabilitative Institutions (PRRI) [In-State] and Detention Centers		14,753.93		14,753.93
569 Tuition – Other	166,577.41			166,577.41
580 Travel			10.00	10.00
Total Other Purchased Services	\$201,448.27	\$91,471.72	\$10.00	\$292,929.99
600 Supplies				
610 General Supplies	2,577.01	1,676.68	8,056.10	12,309.79
Total Supplies	\$2,577.01	\$1,676.68	\$8,056.10	\$12,309.79
Total 1241 Learning Support – Public	\$605,592.91	\$438,413.80	\$8,066.10	\$1,052,072.81

General Fund (10)

1243 Gifted Support

100 Personnel Services – Salaries

	<u>Elementary</u>	<u>Secondary</u>	<u>Federal</u>	<u>Total</u>
100 Personnel Services – Salaries	9,618.23	4,956.68		14,574.91
Total Personnel Services – Salaries	\$9,618.23	\$4,956.68		\$14,574.91

200 Personnel Services – Employee Benefits

210 Group Insurance – Contracted Provider	4,206.74	2,103.37		6,310.11
220 Social Security Contributions	735.75	379.08		1,114.83
230 PSERS Retirement Contributions	3,132.69	1,614.29		4,746.98
250 Unemployment Compensation	1.41	0.68		2.09
Total Personnel Services – Employee Benefits	\$8,076.59	\$4,097.42		\$12,174.01

500 Other Purchased Services

510 Student Transportation Services	764.58	681.90		1,446.48
580 Travel	78.85			78.85
Total Other Purchased Services	\$843.43	\$681.90		\$1,525.33

600 Supplies

610 General Supplies		1,060.50		1,060.50
Total Supplies		\$1,060.50		\$1,060.50
Total 1243 Gifted Support	\$18,538.25	\$10,796.50		\$29,334.75

General Fund (10)

1300 Vocational Education

	<u>Elementary</u>	<u>Secondary</u>	<u>Federal</u>	<u>Total</u>
100 Personnel Services – Salaries				
100 Personnel Services – Salaries		35,946.43		35,946.43
Total Personnel Services – Salaries		\$35,946.43		\$35,946.43
200 Personnel Services – Employee Benefits				
210 Group Insurance – Contracted Provider		10,646.87		10,646.87
220 Social Security Contributions		2,749.94		2,749.94
230 PSERS Retirement Contributions		11,707.81		11,707.81
250 Unemployment Compensation		18.87		18.87
260 Workers' Compensation		385.80		385.80
Total Personnel Services – Employee Benefits		\$25,509.29		\$25,509.29
300 Purchased Professional and Technical Services				
329 Professional Educational Services – Other		626.55		626.55
Total Purchased Professional and Technical Services		\$626.55		\$626.55
500 Other Purchased Services				
564 Tuition To Career and Technology Centers		228,838.00		228,838.00
Total Other Purchased Services		\$228,838.00		\$228,838.00
600 Supplies				
640 Books and Periodicals		3,318.82		3,318.82
Total Supplies		\$3,318.82		\$3,318.82
Total 1300 Vocational Education		\$294,239.09		\$294,239.09

General Fund (10)

	<u>Elementary</u>	<u>Secondary</u>	<u>Federal</u>	<u>Total</u>
1400 Other Instructional Programs – Elementary / Secondary				
100 Personnel Services – Salaries				
100 Personnel Services – Salaries		3,006.17		3,006.17
Total Personnel Services – Salaries		\$3,006.17		\$3,006.17
200 Personnel Services – Employee Benefits				
220 Social Security Contributions		229.50		229.50
230 PSERS Retirement Contributions		977.10		977.10
250 Unemployment Compensation	0.08	0.53		0.61
260 Workers' Compensation	6.17	33.95		40.12
Total Personnel Services – Employee Benefits	\$6.25	\$1,241.08		\$1,247.33
500 Other Purchased Services				
510 Student Transportation Services	2,430.00			2,430.00
Total Other Purchased Services	\$2,430.00			\$2,430.00
600 Supplies				
610 General Supplies	97.50			97.50
620 Energy		445.50		445.50
Total Supplies	\$97.50	\$445.50		\$543.00
Total 1400 Other Instructional Programs – Elementary / Secondary	\$2,533.75	\$4,692.75		\$7,226.50

General Fund (10)

1410 Drivers' Education

100 Personnel Services – Salaries

100 Personnel Services – Salaries 3,000.00 3,000.00

Total Personnel Services – Salaries \$3,000.00 \$3,000.00

200 Personnel Services – Employee Benefits

220 Social Security Contributions 229.50 229.50

230 PSERS Retirement Contributions 977.10 977.10

250 Unemployment Compensation 0.45 0.45

260 Workers' Compensation 33.95 33.95

Total Personnel Services – Employee Benefits \$1,241.00 \$1,241.00

600 Supplies

620 Energy 445.50 445.50

Total Supplies \$445.50 \$445.50

Total 1410 Drivers' Education \$4,686.50 \$4,686.50

General Fund (10)

1420 Summer School

500 Other Purchased Services

510 Student Transportation Services

Elementary

Secondary

Federal

Total

2,430.00

2,430.00

Total Other Purchased Services

\$2,430.00

\$2,430.00

600 Supplies

610 General Supplies

97.50

97.50

Total Supplies

\$97.50

\$97.50

Total 1420 Summer School

\$2,527.50

\$2,527.50

General Fund (10)

1430 Homebound Instruction

100 Personnel Services – Salaries

100 Personnel Services – Salaries

Total Personnel Services – Salaries

200 Personnel Services – Employee Benefits

250 Unemployment Compensation

260 Workers' Compensation

Total Personnel Services – Employee Benefits

Total 1430 Homebound Instruction

	<u>Elementary</u>	<u>Secondary</u>	<u>Federal</u>	<u>Total</u>
		6.17		6.17
		\$6.17		\$6.17
	0.08	0.08		0.16
	6.17			6.17
	\$6.25	\$0.08		\$6.33
	\$6.25	\$6.25		\$12.50

General Fund (10)

2000 Support Services

Total

100 Personnel Services – Salaries

100 Personnel Services – Salaries 1,500,964.78

Total Personnel Services – Salaries \$1,500,964.78

200 Personnel Services – Employee Benefits

210 Group Insurance – Contracted Provider 553,593.46

220 Social Security Contributions 109,447.19

230 PSERS Retirement Contributions 472,403.12

240 Tuition Reimbursement 20,771.65

250 Unemployment Compensation 382.20

260 Workers' Compensation 9,216.32

Total Personnel Services – Employee Benefits \$1,165,813.94

300 Purchased Professional and Technical Services

329 Professional Educational Services – Other 79,115.45

Total Purchased Professional and Technical Services \$79,115.45

400 Purchased Property Services

410 Cleaning Services 8,490.06

420 Utility Services 89,085.80

430 Repairs and Maintenance Services 59,956.25

440 Rentals 1,008.00

Total Purchased Property Services \$158,540.11

500 Other Purchased Services

510 Student Transportation Services 715.68

513 Contracted Carriers 557,335.52

520 Insurance – General 407.00

521 Fire Insurance 29,135.00

522 Automotive Liability Insurance 4,570.01

523 General Property and Liability Insurance 5,590.99

530 Communications 28,846.13

549 Other Advertising/Public Relations 5,161.85

550 Printing and Binding 1,740.42

580 Travel 15,848.31

595 IU Payments By Withholding 5,116.14

Total Other Purchased Services \$654,467.05

600 Supplies

610 General Supplies 175,627.93

620 Energy 127,493.85

640 Books and Periodicals 73,007.23

650 Supplies & Fees – Technology Related (650.00)

Total Supplies \$375,479.01

800 Other Objects

810 Dues and Fees 10,196.61

LEA : 106169003 Union SD

Printed 11/27/2018 8:26:39 AM

General Fund (10)

2000 Support Services

	<u>Total</u>
Total Other Objects	\$10,196.61
Total 2000 Support Services	\$3,944,576.95

General Fund (10)

2100 Support Services – Students

	<u>Elementary</u>	<u>Secondary</u>	<u>Federal</u>	<u>Total</u>
100 Personnel Services – Salaries				
100 Personnel Services – Salaries	133,552.62	146,382.31		279,934.93
Total Personnel Services – Salaries	\$133,552.62	\$146,382.31		\$279,934.93
200 Personnel Services – Employee Benefits				
210 Group Insurance – Contracted Provider	39,569.88	19,498.57		59,068.45
220 Social Security Contributions	10,216.66	6,648.64		16,865.30
230 PSERS Retirement Contributions	43,498.01	45,029.98		88,527.99
250 Unemployment Compensation	33.02	33.41		66.43
260 Workers' Compensation	925.96	953.75		1,879.71
Total Personnel Services – Employee Benefits	\$94,243.53	\$72,164.35		\$166,407.88
400 Purchased Property Services				
430 Repairs and Maintenance Services		452.60		452.60
Total Purchased Property Services		\$452.60		\$452.60
500 Other Purchased Services				
510 Student Transportation Services	6.34	709.34		715.68
580 Travel	807.51	1,054.81		1,862.32
Total Other Purchased Services	\$813.85	\$1,764.15		\$2,578.00
600 Supplies				
610 General Supplies	1,784.47	4,368.84	1,191.70	7,345.01
Total Supplies	\$1,784.47	\$4,368.84	\$1,191.70	\$7,345.01
800 Other Objects				
810 Dues and Fees	152.50	152.50		305.00
Total Other Objects	\$152.50	\$152.50		\$305.00
Total 2100 Support Services – Students	\$230,546.97	\$225,284.75	\$1,191.70	\$457,023.42

General Fund (10)

	<u>Elementary</u>	<u>Secondary</u>	<u>Federal</u>	<u>Total</u>
2120 Guidance Services				
100 Personnel Services – Salaries				
100 Personnel Services – Salaries	64,531.00	73,134.58		137,665.58
Total Personnel Services – Salaries	\$64,531.00	\$73,134.58		\$137,665.58
200 Personnel Services – Employee Benefits				
210 Group Insurance – Contracted Provider	21,034.50	963.19		21,997.69
220 Social Security Contributions	4,936.60	5,594.67		10,531.27
230 PSERS Retirement Contributions	21,017.80	22,549.76		43,567.56
250 Unemployment Compensation	12.92	13.30		26.22
260 Workers' Compensation	447.55	475.33		922.88
Total Personnel Services – Employee Benefits	\$47,449.37	\$29,596.25		\$77,045.62
400 Purchased Property Services				
430 Repairs and Maintenance Services		452.60		452.60
Total Purchased Property Services		\$452.60		\$452.60
500 Other Purchased Services				
510 Student Transportation Services	6.34	709.34		715.68
580 Travel	199.29	446.60		645.89
Total Other Purchased Services	\$205.63	\$1,155.94		\$1,361.57
600 Supplies				
610 General Supplies	944.73	3,529.10		4,473.83
Total Supplies	\$944.73	\$3,529.10		\$4,473.83
Total 2120 Guidance Services	\$113,130.73	\$107,868.47		\$220,999.20

General Fund (10)

2140 Psychological Services

	<u>Elementary</u>	<u>Secondary</u>	<u>Federal</u>	<u>Total</u>
100 Personnel Services – Salaries				
100 Personnel Services – Salaries	37,013.50	39,845.02		76,858.52
Total Personnel Services – Salaries	\$37,013.50	\$39,845.02		\$76,858.52
200 Personnel Services – Employee Benefits				
210 Group Insurance – Contracted Provider	3,724.67	3,724.67		7,449.34
220 Social Security Contributions	2,831.51			2,831.51
230 PSERS Retirement Contributions	12,055.26	12,055.27		24,110.53
250 Unemployment Compensation	6.77	6.78		13.55
260 Workers' Compensation	248.46	248.47		496.93
Total Personnel Services – Employee Benefits	\$18,866.67	\$16,035.19		\$34,901.86
500 Other Purchased Services				
580 Travel	451.35	451.34		902.69
Total Other Purchased Services	\$451.35	\$451.34		\$902.69
600 Supplies				
610 General Supplies	729.18	729.18	1,191.70	2,650.06
Total Supplies	\$729.18	\$729.18	\$1,191.70	\$2,650.06
800 Other Objects				
810 Dues and Fees	125.00	125.00		250.00
Total Other Objects	\$125.00	\$125.00		\$250.00
Total 2140 Psychological Services	\$57,185.70	\$57,185.73	\$1,191.70	\$115,563.13

General Fund (10)

2150 Speech Pathology and Audiology Services

	<u>Elementary</u>	<u>Secondary</u>	<u>Federal</u>	<u>Total</u>
100 Personnel Services – Salaries				
100 Personnel Services – Salaries	18,230.62	19,625.21		37,855.83
Total Personnel Services – Salaries	\$18,230.62	\$19,625.21		\$37,855.83
200 Personnel Services – Employee Benefits				
210 Group Insurance – Contracted Provider	4,937.78	4,937.79		9,875.57
220 Social Security Contributions	1,394.59			1,394.59
230 PSERS Retirement Contributions	5,937.67	5,937.67		11,875.34
250 Unemployment Compensation	8.75	8.76		17.51
260 Workers' Compensation	137.35	137.36		274.71
Total Personnel Services – Employee Benefits	\$12,416.14	\$11,021.58		\$23,437.72
500 Other Purchased Services				
580 Travel	156.87	156.87		313.74
Total Other Purchased Services	\$156.87	\$156.87		\$313.74
600 Supplies				
610 General Supplies	27.34	27.34		54.68
Total Supplies	\$27.34	\$27.34		\$54.68
800 Other Objects				
810 Dues and Fees	27.50	27.50		55.00
Total Other Objects	\$27.50	\$27.50		\$55.00
Total 2150 Speech Pathology and Audiology Services	\$30,858.47	\$30,858.50		\$61,716.97

General Fund (10)

2190 Other Student Services

100 Personnel Services – Salaries

	<u>Elementary</u>	<u>Secondary</u>	<u>Federal</u>	<u>Total</u>
100 Personnel Services – Salaries	13,777.50	13,777.50		27,555.00
Total Personnel Services – Salaries	\$13,777.50	\$13,777.50		\$27,555.00

200 Personnel Services – Employee Benefits

210 Group Insurance – Contracted Provider	9,872.93	9,872.92		19,745.85
220 Social Security Contributions	1,053.96	1,053.97		2,107.93
230 PSERS Retirement Contributions	4,487.28	4,487.28		8,974.56
250 Unemployment Compensation	4.58	4.57		9.15
260 Workers' Compensation	92.60	92.59		185.19
Total Personnel Services – Employee Benefits	\$15,511.35	\$15,511.33		\$31,022.68

600 Supplies

610 General Supplies	83.22	83.22		166.44
Total Supplies	\$83.22	\$83.22		\$166.44
Total 2190 Other Student Services	\$29,372.07	\$29,372.05		\$58,744.12

General Fund (10)

	<u>Elementary</u>	<u>Secondary</u>	<u>Federal</u>	<u>Total</u>
2200 Support Services – Instructional Staff				
100 Personnel Services – Salaries				
100 Personnel Services – Salaries	51,296.46			51,296.46
Total Personnel Services – Salaries	\$51,296.46			\$51,296.46
200 Personnel Services – Employee Benefits				
210 Group Insurance – Contracted Provider	6,310.34			6,310.34
220 Social Security Contributions	3,924.13			3,924.13
230 PSERS Retirement Contributions	16,707.20			16,707.20
240 Tuition Reimbursement	3,830.00	3,141.65		6,971.65
250 Unemployment Compensation	18.63			18.63
260 Workers' Compensation	203.70			203.70
Total Personnel Services – Employee Benefits	\$30,994.00	\$3,141.65		\$34,135.65
300 Purchased Professional and Technical Services				
329 Professional Educational Services – Other	585.19			585.19
Total Purchased Professional and Technical Services	\$585.19			\$585.19
400 Purchased Property Services				
430 Repairs and Maintenance Services		128.14		128.14
Total Purchased Property Services		\$128.14		\$128.14
500 Other Purchased Services				
580 Travel	45.00	20.00		65.00
Total Other Purchased Services	\$45.00	\$20.00		\$65.00
600 Supplies				
610 General Supplies	1,461.52			1,461.52
640 Books and Periodicals	5,358.54	1,018.00		6,376.54
Total Supplies	\$6,820.06	\$1,018.00		\$7,838.06
Total 2200 Support Services – Instructional Staff	\$89,740.71	\$4,307.79		\$94,048.50

General Fund (10)

	<u>Elementary</u>	<u>Secondary</u>	<u>Federal</u>	<u>Total</u>
2250 School Library Services				
100 Personnel Services – Salaries				
100 Personnel Services – Salaries	51,296.46			51,296.46
Total Personnel Services – Salaries	\$51,296.46			\$51,296.46
200 Personnel Services – Employee Benefits				
210 Group Insurance – Contracted Provider	6,310.34			6,310.34
220 Social Security Contributions	3,924.13			3,924.13
230 PSERS Retirement Contributions	16,707.20			16,707.20
250 Unemployment Compensation	18.63			18.63
260 Workers' Compensation	203.70			203.70
Total Personnel Services – Employee Benefits	\$27,164.00			\$27,164.00
300 Purchased Professional and Technical Services				
329 Professional Educational Services – Other	585.19			585.19
Total Purchased Professional and Technical Services	\$585.19			\$585.19
400 Purchased Property Services				
430 Repairs and Maintenance Services		128.14		128.14
Total Purchased Property Services		\$128.14		\$128.14
600 Supplies				
610 General Supplies	711.52			711.52
640 Books and Periodicals	5,358.54	1,018.00		6,376.54
Total Supplies	\$6,070.06	\$1,018.00		\$7,088.06
Total 2250 School Library Services	\$85,115.71	\$1,146.14		\$86,261.85

General Fund (10)

	<u>Elementary</u>	<u>Secondary</u>	<u>Federal</u>	<u>Total</u>
2270 Instructional Staff Professional Development Services				
200 Personnel Services – Employee Benefits				
240 Tuition Reimbursement	3,830.00	3,141.65		6,971.65
Total Personnel Services – Employee Benefits	\$3,830.00	\$3,141.65		\$6,971.65
500 Other Purchased Services				
580 Travel	45.00	20.00		65.00
Total Other Purchased Services	\$45.00	\$20.00		\$65.00
600 Supplies				
610 General Supplies	750.00			750.00
Total Supplies	\$750.00			\$750.00
Total 2270 Instructional Staff Professional Development Services	\$4,625.00	\$3,161.65		\$7,786.65

LEA : 106169003 Union SD

Printed 11/27/2018 8:26:39 AM

Page - 11 of 39

General Fund (10)

	<u>Elementary</u>	<u>Secondary</u>	<u>Federal</u>	<u>Total</u>
2300 Support Services – Administration				
100 Personnel Services – Salaries				
100 Personnel Services – Salaries	144,359.68	131,516.41		480,948.27
Total Personnel Services – Salaries	\$144,359.68	\$131,516.41		\$480,948.27
200 Personnel Services – Employee Benefits				
210 Group Insurance – Contracted Provider	45,327.79	27,819.07		186,536.02
220 Social Security Contributions	11,051.71	10,079.91		36,403.73
230 PSERS Retirement Contributions	47,018.16	41,564.85		146,935.63
250 Unemployment Compensation	32.93	32.71		100.95
260 Workers' Compensation	950.65	879.65		2,959.96
Total Personnel Services – Employee Benefits	\$104,381.24	\$80,376.19		\$372,936.29
300 Purchased Professional and Technical Services				
329 Professional Educational Services – Other	3,847.93	6,474.96		52,731.19
Total Purchased Professional and Technical Services	\$3,847.93	\$6,474.96		\$52,731.19
400 Purchased Property Services				
430 Repairs and Maintenance Services	3,951.12	8,829.62		12,780.74
440 Rentals				1,008.00
Total Purchased Property Services	\$3,951.12	\$8,829.62		\$13,788.74
500 Other Purchased Services				
520 Insurance – General				407.00
530 Communications	967.41	1,132.00		2,099.41
549 Other Advertising/Public Relations				5,161.85
580 Travel	2,782.90	1,859.81		10,227.78
Total Other Purchased Services	\$3,750.31	\$2,991.81		\$17,896.04
600 Supplies				
610 General Supplies	11,014.71	2,217.84		20,650.30
640 Books and Periodicals	28,218.02	7,360.00		35,578.02
Total Supplies	\$39,232.73	\$9,577.84		\$56,228.32
800 Other Objects				
810 Dues and Fees	595.00	595.00		8,102.33
Total Other Objects	\$595.00	\$595.00		\$8,102.33
Total 2300 Support Services – Administration	\$300,118.01	\$240,361.83		\$1,002,631.18

General Fund (10)

	<u>Elementary</u>	<u>Secondary</u>	<u>Federal</u>	<u>Total</u>
2310 Board Services				
100 Personnel Services – Salaries				
100 Personnel Services – Salaries				1,300.00
Total Personnel Services – Salaries				\$1,300.00
200 Personnel Services – Employee Benefits				
220 Social Security Contributions				99.58
230 PSERS Retirement Contributions				423.54
250 Unemployment Compensation				0.32
260 Workers' Compensation				9.26
Total Personnel Services – Employee Benefits				\$532.70
300 Purchased Professional and Technical Services				
329 Professional Educational Services – Other				9,890.00
Total Purchased Professional and Technical Services				\$9,890.00
500 Other Purchased Services				
520 Insurance – General				407.00
549 Other Advertising/Public Relations				5,161.85
580 Travel				489.12
Total Other Purchased Services				\$6,057.97
600 Supplies				
610 General Supplies				597.54
Total Supplies				\$597.54
800 Other Objects				
810 Dues and Fees				4,812.33
Total Other Objects				\$4,812.33
Total 2310 Board Services				\$23,190.54

General Fund (10)

2320 Board Treasurer Services

Elementary

Secondary

Federal

Total

100 Personnel Services – Salaries

100 Personnel Services – Salaries

3,875.00

Total Personnel Services – Salaries

\$3,875.00

200 Personnel Services – Employee Benefits

250 Unemployment Compensation

0.37

260 Workers' Compensation

27.77

Total Personnel Services – Employee Benefits

\$28.14

Total 2320 Board Treasurer Services

\$3,903.14

General Fund (10)

	<u>Elementary</u>	<u>Secondary</u>	<u>Federal</u>	<u>Total</u>
2330 Tax Assessment and Collection Services				
100 Personnel Services – Salaries				
100 Personnel Services – Salaries				18,070.75
Total Personnel Services – Salaries				\$18,070.75
200 Personnel Services – Employee Benefits				
220 Social Security Contributions				1,382.46
Total Personnel Services – Employee Benefits				\$1,382.46
300 Purchased Professional and Technical Services				
329 Professional Educational Services – Other				14,117.30
Total Purchased Professional and Technical Services				\$14,117.30
600 Supplies				
610 General Supplies				2,672.81
Total Supplies				\$2,672.81
Total 2330 Tax Assessment and Collection Services				\$36,243.32

General Fund (10)

	<u>Elementary</u>	<u>Secondary</u>	<u>Federal</u>	<u>Total</u>
2350 Legal and Accounting Services				
200 Personnel Services – Employee Benefits				
210 Group Insurance – Contracted Provider				13,539.98
Total Personnel Services – Employee Benefits				\$13,539.98
300 Purchased Professional and Technical Services				
329 Professional Educational Services – Other				18,401.00
Total Purchased Professional and Technical Services				\$18,401.00
600 Supplies				
610 General Supplies				1,064.00
Total Supplies				\$1,064.00
Total 2350 Legal and Accounting Services				\$33,004.98

General Fund (10)

2360 Office of the Superintendent / Executive Director Services

Elementary

Secondary

Federal

Total

100 Personnel Services – Salaries

100 Personnel Services – Salaries

148,345.03

Total Personnel Services – Salaries

\$148,345.03

200 Personnel Services – Employee Benefits

210 Group Insurance – Contracted Provider

77,812.04

220 Social Security Contributions

11,379.85

230 PSERS Retirement Contributions

47,696.99

250 Unemployment Compensation

26.18

260 Workers' Compensation

935.22

Total Personnel Services – Employee Benefits

\$137,850.28

400 Purchased Property Services

440 Rentals

1,008.00

Total Purchased Property Services

\$1,008.00

500 Other Purchased Services

580 Travel

2,658.11

Total Other Purchased Services

\$2,658.11

600 Supplies

610 General Supplies

2,732.90

Total Supplies

\$2,732.90

800 Other Objects

810 Dues and Fees

2,040.00

Total Other Objects

\$2,040.00

Total 2360 Office of the Superintendent / Executive Director Services

\$294,634.32

General Fund (10)

2380 Office of the Principal Services

	<u>Elementary</u>	<u>Secondary</u>	<u>Federal</u>	<u>Total</u>
100 Personnel Services – Salaries				
100 Personnel Services – Salaries	144,359.68	131,516.41		275,876.09
Total Personnel Services – Salaries	\$144,359.68	\$131,516.41		\$275,876.09
200 Personnel Services – Employee Benefits				
210 Group Insurance – Contracted Provider	45,327.79	27,819.07		73,146.86
220 Social Security Contributions	11,051.71	10,079.91		21,131.62
230 PSERS Retirement Contributions	47,018.16	41,564.85		88,583.01
250 Unemployment Compensation	32.93	32.71		65.64
260 Workers' Compensation	950.65	879.65		1,830.30
Total Personnel Services – Employee Benefits	\$104,381.24	\$80,376.19		\$184,757.43
300 Purchased Professional and Technical Services				
329 Professional Educational Services – Other	3,847.93	6,474.96		10,322.89
Total Purchased Professional and Technical Services	\$3,847.93	\$6,474.96		\$10,322.89
400 Purchased Property Services				
430 Repairs and Maintenance Services	3,951.12	8,829.62		12,780.74
Total Purchased Property Services	\$3,951.12	\$8,829.62		\$12,780.74
500 Other Purchased Services				
530 Communications	967.41	1,132.00		2,099.41
580 Travel	2,782.90	1,859.81		4,642.71
Total Other Purchased Services	\$3,750.31	\$2,991.81		\$6,742.12
600 Supplies				
610 General Supplies	11,014.71	2,217.84		13,232.55
640 Books and Periodicals	28,218.02	7,360.00		35,578.02
Total Supplies	\$39,232.73	\$9,577.84		\$48,810.57
800 Other Objects				
810 Dues and Fees	595.00	595.00		1,190.00
Total Other Objects	\$595.00	\$595.00		\$1,190.00
Total 2380 Office of the Principal Services	\$300,118.01	\$240,361.83		\$540,479.84

General Fund (10)

2390 Other Administration Services

Elementary Secondary Federal Total

100 Personnel Services – Salaries

100 Personnel Services – Salaries 33,481.40

Total Personnel Services – Salaries \$33,481.40

200 Personnel Services – Employee Benefits

210 Group Insurance – Contracted Provider 22,037.14

220 Social Security Contributions 2,410.22

230 PSERS Retirement Contributions 10,232.09

250 Unemployment Compensation 8.44

260 Workers' Compensation 157.41

Total Personnel Services – Employee Benefits \$34,845.30

500 Other Purchased Services

580 Travel 2,437.84

Total Other Purchased Services \$2,437.84

600 Supplies

610 General Supplies 350.50

Total Supplies \$350.50

800 Other Objects

810 Dues and Fees 60.00

Total Other Objects \$60.00

Total 2390 Other Administration Services \$71,175.04

General Fund (10)

	<u>Elementary</u>	<u>Secondary</u>	<u>Federal</u>	<u>Total</u>
2400 Support Services – Pupil Health				
100 Personnel Services – Salaries				
100 Personnel Services – Salaries				68,659.47
Total Personnel Services – Salaries				\$68,659.47
200 Personnel Services – Employee Benefits				
210 Group Insurance – Contracted Provider				42,457.90
220 Social Security Contributions				5,252.58
230 PSERS Retirement Contributions				22,362.45
250 Unemployment Compensation				21.94
260 Workers' Compensation				456.81
Total Personnel Services – Employee Benefits				\$70,551.68
300 Purchased Professional and Technical Services				
329 Professional Educational Services – Other				2,263.00
Total Purchased Professional and Technical Services				\$2,263.00
400 Purchased Property Services				
430 Repairs and Maintenance Services				334.69
Total Purchased Property Services				\$334.69
500 Other Purchased Services				
530 Communications				25.42
580 Travel				793.67
Total Other Purchased Services				\$819.09
600 Supplies				
610 General Supplies				3,881.12
Total Supplies				\$3,881.12
Total 2400 Support Services – Pupil Health				\$146,509.05

General Fund (10)

2440 Nursing Services

	<u>Elementary</u>	<u>Secondary</u>	<u>Federal</u>	<u>Total</u>
100 Personnel Services – Salaries				
100 Personnel Services – Salaries				68,659.47
Total Personnel Services – Salaries				\$68,659.47
200 Personnel Services – Employee Benefits				
210 Group Insurance – Contracted Provider				42,457.90
220 Social Security Contributions				5,252.58
230 PSERS Retirement Contributions				22,362.45
250 Unemployment Compensation				21.94
260 Workers' Compensation				456.81
Total Personnel Services – Employee Benefits				\$70,551.68
300 Purchased Professional and Technical Services				
329 Professional Educational Services – Other				2,263.00
Total Purchased Professional and Technical Services				\$2,263.00
400 Purchased Property Services				
430 Repairs and Maintenance Services				334.69
Total Purchased Property Services				\$334.69
500 Other Purchased Services				
530 Communications				25.42
580 Travel				793.67
Total Other Purchased Services				\$819.09
600 Supplies				
610 General Supplies				3,881.12
Total Supplies				\$3,881.12
Total 2440 Nursing Services				\$146,509.05

General Fund (10)

2500 Support Services – Business

Elementary Secondary Federal Total

100 Personnel Services – Salaries

100 Personnel Services – Salaries 80,870.20

Total Personnel Services – Salaries \$80,870.20

200 Personnel Services – Employee Benefits

210 Group Insurance – Contracted Provider 63,994.27

220 Social Security Contributions 6,194.04

230 PSERS Retirement Contributions 26,287.22

250 Unemployment Compensation 20.78

260 Workers' Compensation 567.90

Total Personnel Services – Employee Benefits \$97,064.21

300 Purchased Professional and Technical Services

329 Professional Educational Services – Other 10,142.73

Total Purchased Professional and Technical Services \$10,142.73

400 Purchased Property Services

430 Repairs and Maintenance Services 7,671.33

Total Purchased Property Services \$7,671.33

500 Other Purchased Services

530 Communications 2,607.06

550 Printing and Binding 1,740.42

580 Travel 1,024.15

Total Other Purchased Services \$5,371.63

600 Supplies

610 General Supplies 1,619.45

Total Supplies \$1,619.45

800 Other Objects

810 Dues and Fees 1,789.28

Total Other Objects \$1,789.28

Total 2500 Support Services – Business \$204,528.83

General Fund (10)

2510 Fiscal Services

Elementary

Secondary

Federal

Total

100 Personnel Services – Salaries

100 Personnel Services – Salaries

80,870.20

Total Personnel Services – Salaries

\$80,870.20

200 Personnel Services – Employee Benefits

210 Group Insurance – Contracted Provider

63,994.27

220 Social Security Contributions

6,194.04

230 PSERS Retirement Contributions

26,287.22

250 Unemployment Compensation

20.78

260 Workers' Compensation

567.90

Total Personnel Services – Employee Benefits

\$97,064.21

300 Purchased Professional and Technical Services

329 Professional Educational Services – Other

10,142.73

Total Purchased Professional and Technical Services

\$10,142.73

400 Purchased Property Services

430 Repairs and Maintenance Services

7,671.33

Total Purchased Property Services

\$7,671.33

500 Other Purchased Services

530 Communications

2,607.06

550 Printing and Binding

1,740.42

580 Travel

1,024.15

Total Other Purchased Services

\$5,371.63

600 Supplies

610 General Supplies

1,619.45

Total Supplies

\$1,619.45

800 Other Objects

810 Dues and Fees

1,789.28

Total Other Objects

\$1,789.28

Total 2510 Fiscal Services

\$204,528.83

General Fund (10)

2511 Supervision of Fiscal Services - Head of Component

Elementary Secondary Federal Total

100 Personnel Services – Salaries				
100 Personnel Services – Salaries				80,870.20
Total Personnel Services – Salaries				\$80,870.20
200 Personnel Services – Employee Benefits				
210 Group Insurance – Contracted Provider				63,994.27
220 Social Security Contributions				6,194.04
230 PSERS Retirement Contributions				26,287.22
250 Unemployment Compensation				20.78
260 Workers' Compensation				567.90
Total Personnel Services – Employee Benefits				\$97,064.21
300 Purchased Professional and Technical Services				
329 Professional Educational Services – Other				10,142.73
Total Purchased Professional and Technical Services				\$10,142.73
400 Purchased Property Services				
430 Repairs and Maintenance Services				7,671.33
Total Purchased Property Services				\$7,671.33
500 Other Purchased Services				
530 Communications				2,607.06
550 Printing and Binding				1,740.42
580 Travel				1,024.15
Total Other Purchased Services				\$5,371.63
600 Supplies				
610 General Supplies				1,619.45
Total Supplies				\$1,619.45
800 Other Objects				
810 Dues and Fees				1,789.28
Total Other Objects				\$1,789.28
Total 2511 Supervision of Fiscal Services - Head of Component				\$204,528.83

General Fund (10)

	<u>Elementary</u>	<u>Secondary</u>	<u>Federal</u>	<u>Total</u>
2600 Operation and Maintenance of Plant Services				
100 Personnel Services – Salaries				
100 Personnel Services – Salaries				421,842.05
Total Personnel Services – Salaries				\$421,842.05
200 Personnel Services – Employee Benefits				
210 Group Insurance – Contracted Provider				147,026.38
220 Social Security Contributions				32,275.76
230 PSERS Retirement Contributions				135,321.22
250 Unemployment Compensation				128.90
260 Workers' Compensation				2,398.23
Total Personnel Services – Employee Benefits				\$317,150.49
300 Purchased Professional and Technical Services				
329 Professional Educational Services – Other				13,393.34
Total Purchased Professional and Technical Services				\$13,393.34
400 Purchased Property Services				
410 Cleaning Services				8,490.06
420 Utility Services				89,085.80
430 Repairs and Maintenance Services				37,988.75
Total Purchased Property Services				\$135,564.61
500 Other Purchased Services				
521 Fire Insurance				29,135.00
522 Automotive Liability Insurance				4,570.01
523 General Property and Liability Insurance				5,590.99
530 Communications				24,114.24
580 Travel				103.47
Total Other Purchased Services				\$63,513.71
600 Supplies				
610 General Supplies	56,489.25	52,928.01		109,417.26
620 Energy				127,493.85
Total Supplies	\$56,489.25	\$52,928.01		\$236,911.11
Total 2600 Operation and Maintenance of Plant Services	\$56,489.25	\$52,928.01		\$1,188,375.31

General Fund (10)

2610 Supervision of Operation and Maintenance of Plant Services

Elementary

Secondary

Federal

Total

100 Personnel Services – Salaries

100 Personnel Services – Salaries

83,225.67

Total Personnel Services – Salaries

\$83,225.67

200 Personnel Services – Employee Benefits

210 Group Insurance – Contracted Provider

44,185.72

220 Social Security Contributions

6,371.43

230 PSERS Retirement Contributions

27,106.54

250 Unemployment Compensation

21.37

260 Workers' Compensation

558.68

Total Personnel Services – Employee Benefits

\$78,243.74

Total 2610 Supervision of Operation and Maintenance of Plant Services

\$161,469.41

General Fund (10)

2611 Supervision of Operation and Maintenance of Plant Services – Head of Component

Elementary

Secondary

Federal

Total

100 Personnel Services – Salaries

100 Personnel Services – Salaries

42,312.07

Total Personnel Services – Salaries

\$42,312.07

200 Personnel Services – Employee Benefits

210 Group Insurance – Contracted Provider

23,113.66

220 Social Security Contributions

3,241.55

230 PSERS Retirement Contributions

13,781.02

250 Unemployment Compensation

10.75

260 Workers' Compensation

283.97

Total Personnel Services – Employee Benefits

\$40,430.95

Total 2611 Supervision of Operation and Maintenance of Plant Services – Head of Component

\$82,743.02

General Fund (10)

2619 Supervision of Operation and Maintenance of Plant Services – All Other Supervision

Elementary

Secondary

Federal

Total

100 Personnel Services – Salaries

100 Personnel Services – Salaries

40,913.60

Total Personnel Services – Salaries

\$40,913.60

200 Personnel Services – Employee Benefits

210 Group Insurance – Contracted Provider

21,072.06

220 Social Security Contributions

3,129.88

230 PSERS Retirement Contributions

13,325.52

250 Unemployment Compensation

10.62

260 Workers' Compensation

274.71

Total Personnel Services – Employee Benefits

\$37,812.79

Total 2619 Supervision of Operation and Maintenance of Plant Services – All Other Supervision

\$78,726.39

General Fund (10)

	<u>Elementary</u>	<u>Secondary</u>	<u>Federal</u>	<u>Total</u>
2620 Operation of Buildings Services				
100 Personnel Services – Salaries				
100 Personnel Services – Salaries				338,616.38
Total Personnel Services – Salaries				\$338,616.38
200 Personnel Services – Employee Benefits				
210 Group Insurance – Contracted Provider				102,840.66
220 Social Security Contributions				25,904.33
230 PSERS Retirement Contributions				108,214.68
250 Unemployment Compensation				107.53
260 Workers' Compensation				1,839.55
Total Personnel Services – Employee Benefits				\$238,906.75
300 Purchased Professional and Technical Services				
329 Professional Educational Services – Other				13,393.34
Total Purchased Professional and Technical Services				\$13,393.34
400 Purchased Property Services				
410 Cleaning Services				8,490.06
420 Utility Services				89,085.80
430 Repairs and Maintenance Services				37,988.75
Total Purchased Property Services				\$135,564.61
500 Other Purchased Services				
521 Fire Insurance				29,135.00
522 Automotive Liability Insurance				4,570.01
523 General Property and Liability Insurance				5,590.99
530 Communications				24,114.24
580 Travel				103.47
Total Other Purchased Services				\$63,513.71
600 Supplies				
610 General Supplies	56,489.25	52,928.01		109,417.26
620 Energy				127,493.85
Total Supplies	\$56,489.25	\$52,928.01		\$236,911.11
Total 2620 Operation of Buildings Services	\$56,489.25	\$52,928.01		\$1,026,905.90

General Fund (10)

	<u>Elementary</u>	<u>Secondary</u>	<u>Federal</u>	<u>Total</u>
2700 Student Transportation Services				
100 Personnel Services – Salaries				
100 Personnel Services – Salaries				4,977.51
Total Personnel Services – Salaries				\$4,977.51
200 Personnel Services – Employee Benefits				
210 Group Insurance – Contracted Provider				1,928.14
220 Social Security Contributions				380.72
230 PSERS Retirement Contributions				1,621.17
250 Unemployment Compensation				1.21
260 Workers' Compensation				40.12
Total Personnel Services – Employee Benefits				\$3,971.36
500 Other Purchased Services				
513 Contracted Carriers			9,505.29	557,335.52
Total Other Purchased Services			\$9,505.29	\$557,335.52
600 Supplies				
610 General Supplies				550.00
Total Supplies				\$550.00
Total 2700 Student Transportation Services			\$9,505.29	\$566,834.39

General Fund (10)

2710 Supervision of Student Transportation Services

Elementary

Secondary

Federal

Total

100 Personnel Services – Salaries

100 Personnel Services – Salaries

4,977.51

Total Personnel Services – Salaries

\$4,977.51

200 Personnel Services – Employee Benefits

210 Group Insurance – Contracted Provider

1,928.14

220 Social Security Contributions

380.72

230 PSERS Retirement Contributions

1,621.17

250 Unemployment Compensation

1.21

260 Workers' Compensation

40.12

Total Personnel Services – Employee Benefits

\$3,971.36

500 Other Purchased Services

513 Contracted Carriers

83,867.31

Total Other Purchased Services

\$83,867.31

600 Supplies

610 General Supplies

550.00

Total Supplies

\$550.00

Total 2710 Supervision of Student Transportation Services

\$93,366.18

General Fund (10)

2711 Supervision of Student Transportation Services – Head of Component

	<u>Elementary</u>	<u>Secondary</u>	<u>Federal</u>	<u>Total</u>
100 Personnel Services – Salaries				
100 Personnel Services – Salaries				4,977.51
Total Personnel Services – Salaries				\$4,977.51
200 Personnel Services – Employee Benefits				
210 Group Insurance – Contracted Provider				1,928.14
220 Social Security Contributions				380.72
230 PSERS Retirement Contributions				1,621.17
250 Unemployment Compensation				1.21
260 Workers' Compensation				40.12
Total Personnel Services – Employee Benefits				\$3,971.36
500 Other Purchased Services				
513 Contracted Carriers				83,867.31
Total Other Purchased Services				\$83,867.31
600 Supplies				
610 General Supplies				550.00
Total Supplies				\$550.00
Total 2711 Supervision of Student Transportation Services – Head of Component				\$93,366.18

General Fund (10)

2720 Vehicle Operation Services

500 Other Purchased Services

513 Contracted Carriers

Total Other Purchased Services

Total 2720 Vehicle Operation Services

Elementary

Secondary

Federal

Total

9,505.29

473,468.21

\$9,505.29

\$473,468.21

\$9,505.29

\$473,468.21

General Fund (10)

2800 Support Services – Central

100 Personnel Services – Salaries

100 Personnel Services – Salaries

Total Personnel Services – Salaries

200 Personnel Services – Employee Benefits

210 Group Insurance – Contracted Provider

220 Social Security Contributions

230 PSERS Retirement Contributions

240 Tuition Reimbursement

250 Unemployment Compensation

260 Workers' Compensation

Total Personnel Services – Employee Benefits

400 Purchased Property Services

430 Repairs and Maintenance Services

Total Purchased Property Services

500 Other Purchased Services

580 Travel

Total Other Purchased Services

600 Supplies

610 General Supplies

640 Books and Periodicals

650 Supplies & Fees – Technology Related

Total Supplies

Total 2800 Support Services – Central

	<u>Elementary</u>	<u>Secondary</u>	<u>Federal</u>	<u>Total</u>
			6,000.00	112,435.89
			\$6,000.00	\$112,435.89
				46,271.96
				8,150.93
				34,640.24
				13,800.00
				23.36
				709.89
				\$103,596.38
				600.00
				\$600.00
				1,771.92
				\$1,771.92
				30,703.27
				31,052.67
				(650.00)
				\$61,105.94
			\$6,000.00	\$279,510.13

General Fund (10)

2830 Staff Services

Elementary

Secondary

Federal

Total

200 Personnel Services – Employee Benefits

240 Tuition Reimbursement

13,800.00

Total Personnel Services – Employee Benefits

\$13,800.00

Total 2830 Staff Services

\$13,800.00

General Fund (10)

2834 Staff Development Services – Non-Instructional, Certified Staff Only

Elementary

Secondary

Federal

Total

200 Personnel Services – Employee Benefits

240 Tuition Reimbursement

13,800.00

Total Personnel Services – Employee Benefits

\$13,800.00

Total 2834 Staff Development Services – Non-Instructional, Certified Staff Only

\$13,800.00

General Fund (10)

2840 Data Processing Services

	<u>Elementary</u>	<u>Secondary</u>	<u>Federal</u>	<u>Total</u>
100 Personnel Services – Salaries				
100 Personnel Services – Salaries				106,435.89
Total Personnel Services – Salaries				\$106,435.89
200 Personnel Services – Employee Benefits				
210 Group Insurance – Contracted Provider				46,271.96
220 Social Security Contributions				8,150.93
230 PSERS Retirement Contributions				34,640.24
250 Unemployment Compensation				23.36
260 Workers' Compensation				709.89
Total Personnel Services – Employee Benefits				\$89,796.38
400 Purchased Property Services				
430 Repairs and Maintenance Services				600.00
Total Purchased Property Services				\$600.00
500 Other Purchased Services				
580 Travel				1,771.92
Total Other Purchased Services				\$1,771.92
600 Supplies				
610 General Supplies				30,703.27
640 Books and Periodicals				31,052.67
650 Supplies & Fees – Technology Related				(650.00)
Total Supplies				\$61,105.94
Total 2840 Data Processing Services				\$259,710.13

General Fund (10)

2850 State and Federal Agency Liaison Services

Elementary

Secondary

Federal

Total

100 Personnel Services – Salaries

100 Personnel Services – Salaries

6,000.00

6,000.00

Total Personnel Services – Salaries

\$6,000.00

\$6,000.00

Total 2850 State and Federal Agency Liaison Services

\$6,000.00

\$6,000.00

General Fund (10)

2900 Other Support Services

Elementary

Secondary

Federal

Total

500 Other Purchased Services

595 IU Payments By Withholding

5,116.14

Total Other Purchased Services

\$5,116.14

Total 2900 Other Support Services

\$5,116.14

General Fund (10)

2910 Support Services Not Listed Elsewhere In the 2000 Series

Elementary

Secondary

Federal

Total

500 Other Purchased Services

595 IU Payments By Withholding

5,116.14

Total Other Purchased Services

\$5,116.14

Total 2910 Support Services Not Listed Elsewhere In the 2000 Series

\$5,116.14

General Fund (10)

3000 Operation of Non-Instructional Services

Total

100 Personnel Services – Salaries

100 Personnel Services – Salaries 96,247.29

Total Personnel Services – Salaries \$96,247.29

200 Personnel Services – Employee Benefits

220 Social Security Contributions 7,106.13

230 PSERS Retirement Contributions 26,864.28

250 Unemployment Compensation 42.36

260 Workers' Compensation 197.53

Total Personnel Services – Employee Benefits \$34,210.30

300 Purchased Professional and Technical Services

329 Professional Educational Services – Other 62,701.57

330 Other Professional Services 780.00

Total Purchased Professional and Technical Services \$63,481.57

400 Purchased Property Services

420 Utility Services 354.74

430 Repairs and Maintenance Services 5,805.77

Total Purchased Property Services \$6,160.51

500 Other Purchased Services

510 Student Transportation Services 27,053.91

520 Insurance – General 5,740.00

580 Travel 4,204.19

Total Other Purchased Services \$36,998.10

600 Supplies

610 General Supplies 33,201.09

640 Books and Periodicals 3,355.00

Total Supplies \$36,556.09

800 Other Objects

810 Dues and Fees 6,170.00

860 Grants To Municipal and Community Service Organizations 450.00

Total Other Objects \$6,620.00

Total 3000 Operation of Non-Instructional Services \$280,273.86

General Fund (10)

3200 Student Activities

Elementary Secondary Federal Total

100	<u>Personnel Services – Salaries</u>				
	100 Personnel Services – Salaries				88,334.79
Total Personnel Services – Salaries					\$88,334.79
200	<u>Personnel Services – Employee Benefits</u>				
	220 Social Security Contributions				6,500.77
	230 PSERS Retirement Contributions				26,856.14
	250 Unemployment Compensation				36.75
	260 Workers' Compensation				197.53
Total Personnel Services – Employee Benefits					\$33,591.19
300	<u>Purchased Professional and Technical Services</u>				
	329 Professional Educational Services – Other				62,701.57
	330 Other Professional Services				780.00
Total Purchased Professional and Technical Services					\$63,481.57
400	<u>Purchased Property Services</u>				
	420 Utility Services				354.74
	430 Repairs and Maintenance Services				5,805.77
Total Purchased Property Services					\$6,160.51
500	<u>Other Purchased Services</u>				
	510 Student Transportation Services				27,053.91
	520 Insurance – General				5,740.00
	580 Travel				3,484.43
Total Other Purchased Services					\$36,278.34
600	<u>Supplies</u>				
	610 General Supplies				29,824.10
	640 Books and Periodicals				3,355.00
Total Supplies					\$33,179.10
800	<u>Other Objects</u>				
	810 Dues and Fees				6,170.00
Total Other Objects					\$6,170.00
Total 3200 Student Activities					\$267,195.50

General Fund (10)

3300 Community Services

Elementary Secondary Federal Total

100	<u>Personnel Services – Salaries</u>			
	100 Personnel Services – Salaries			7,912.50
Total Personnel Services – Salaries				\$7,912.50
200	<u>Personnel Services – Employee Benefits</u>			
	220 Social Security Contributions			605.36
	230 PSERS Retirement Contributions			8.14
	250 Unemployment Compensation			5.61
Total Personnel Services – Employee Benefits				\$619.11
500	<u>Other Purchased Services</u>			
	580 Travel		719.76	719.76
Total Other Purchased Services			\$719.76	\$719.76
600	<u>Supplies</u>			
	610 General Supplies		3,376.99	3,376.99
Total Supplies			\$3,376.99	\$3,376.99
800	<u>Other Objects</u>			
	860 Grants To Municipal and Community Service Organizations			450.00
Total Other Objects				\$450.00
Total 3300 Community Services			\$4,096.75	\$13,078.36

General Fund (10)

5000 Other Expenditures and Financing Uses

Total

800 Other Objects

830 Interest 40,723.77

Total Other Objects \$40,723.77

900 Other Uses of Funds

910 Redemption of Principal 298,540.00

930 Fund Transfers 100,300.00

Total Other Uses of Funds \$398,840.00

Total 5000 Other Expenditures and Financing Uses \$439,563.77

General Fund (10)

	<u>Elementary</u>	<u>Secondary</u>	<u>Federal</u>	<u>Total</u>
5100 Debt Service / Other Expenditures and Financing Uses				
800 Other Objects				
830 Interest				40,723.77
Total Other Objects				\$40,723.77
900 Other Uses of Funds				
910 Redemption of Principal				298,540.00
Total Other Uses of Funds				\$298,540.00
Total 5100 Debt Service / Other Expenditures and Financing Uses				\$339,263.77

General Fund (10)

	<u>Elementary</u>	<u>Secondary</u>	<u>Federal</u>	<u>Total</u>
5110 Debt Service				
800 Other Objects				
830 Interest				40,723.77
Total Other Objects				\$40,723.77
900 Other Uses of Funds				
910 Redemption of Principal				298,540.00
Total Other Uses of Funds				\$298,540.00
Total 5110 Debt Service				\$339,263.77

General Fund (10)

5200 Interfund Transfers – Out

Elementary

Secondary

Federal

Total

900 Other Uses of Funds

930 Fund Transfers

100,300.00

Total Other Uses of Funds

\$100,300.00

Total 5200 Interfund Transfers – Out

\$100,300.00

General Fund (10)

	<u>Elementary</u>	<u>Secondary</u>	<u>Federal</u>	<u>Total</u>
5250 Enterprise Fund Transfers				
900 Other Uses of Funds				
930 Fund Transfers				100,300.00
Total Other Uses of Funds				\$100,300.00
Total 5250 Enterprise Fund Transfers				\$100,300.00

Other Capital Projects Fund (39)

2000 Support Services

400 Purchased Property Services

440 Rentals

Total

7,836.72

Total Purchased Property Services

\$7,836.72

Total 2000 Support Services

\$7,836.72

Other Capital Projects Fund (39)

2600 Operation and Maintenance of Plant Services

Elementary

Secondary

Federal

Total

400 Purchased Property Services

440 Rentals

7,836.72

Total Purchased Property Services

\$7,836.72

Total 2600 Operation and Maintenance of Plant Services

\$7,836.72

Other Capital Projects Fund (39)

2620 Operation of Buildings Services

Elementary

Secondary

Federal

Total

400 Purchased Property Services

440 Rentals

7,836.72

Total Purchased Property Services

\$7,836.72

Total 2620 Operation of Buildings Services

\$7,836.72

	<u>General Fund(10)</u>	<u>Public Purpose Trust(27)</u>	<u>Other Compt Approved (28)</u>	<u>Athletic / Activity(29)</u>	<u>Capital Reserve (690. 1850)(31)</u>
1000 Instruction					
1100 Regular Programs - Elementary / Secondary	5,011,938.85				
1200 Special Programs - Elementary / Secondary	1,244,164.71				
1300 Vocational Education	294,239.09				
1400 Other Instructional Programs - Elementary / Secondary	7,226.50				
Total Instruction	\$6,557,569.15				
2000 Support Services					
2100 Support Services - Students	457,023.42				
2200 Support Services - Instructional Staff	94,048.50				
2300 Support Services - Administration	1,002,631.18				
2400 Support Services - Pupil Health	146,509.05				
2500 Support Services - Business	204,528.83				
2600 Operation and Maintenance of Plant Services	1,188,375.31				
2700 Student Transportation Services	566,834.39				
2800 Support Services - Central	279,510.13				
2900 Other Support Services	5,116.14				
Total Support Services	\$3,944,576.95				
3000 Operation of Non-Instructional Services					
3200 Student Activities	267,195.50				
3300 Community Services	13,078.36				
Total Operation of Non-Instructional Services	\$280,273.86				
5000 Other Expenditures and Financing Uses					
5100 Debt Service / Other Expenditures and Financing Uses	339,263.77				
5200 Interfund Transfers - Out	100,300.00				
Total Other Expenditures and Financing Uses	\$439,563.77				
TOTAL ACTUAL EXPENDITURES & OTHER FINANCING USES	\$11,221,983.73				

	<u>Capital Reserve (1431)(32)</u>	<u>Other Capital Projects Fund(39)</u>	<u>Debt Service(40)</u>	<u>Permanent(90)</u>	<u>Total</u>
1000 Instruction					
1100 Regular Programs - Elementary / Secondary					5,011,938.85
1200 Special Programs - Elementary / Secondary					1,244,164.71
1300 Vocational Education					294,239.09
1400 Other Instructional Programs - Elementary / Secondary					7,226.50
Total Instruction					\$6,557,569.15
2000 Support Services					
2100 Support Services - Students					457,023.42
2200 Support Services - Instructional Staff					94,048.50
2300 Support Services - Administration					1,002,631.18
2400 Support Services - Pupil Health					146,509.05
2500 Support Services - Business					204,528.83
2600 Operation and Maintenance of Plant Services		7,836.72			1,196,212.03
2700 Student Transportation Services					566,834.39
2800 Support Services - Central					279,510.13
2900 Other Support Services					5,116.14
Total Support Services		\$7,836.72			\$3,952,413.67
3000 Operation of Non-Instructional Services					
3200 Student Activities					267,195.50
3300 Community Services					13,078.36
Total Operation of Non-Instructional Services					\$280,273.86
5000 Other Expenditures and Financing Uses					
5100 Debt Service / Other Expenditures and Financing Uses					339,263.77
5200 Interfund Transfers - Out					100,300.00
Total Other Expenditures and Financing Uses					\$439,563.77
TOTAL ACTUAL EXPENDITURES & OTHER FINANCING USES		\$7,836.72			\$11,229,820.45

PSERS Salary Data (Salary Data should relate to the General Fund only)

Amount Description	Amount
Total Salary Base for salaries subject to PSERS withholding	3,414,013.58
Total Federally Funded salaries subject to PSERS withholding	105,084.42
	<hr/>

Title I Expenditure Data

Amount Description	Amount
Expenditures Funded with Current Title I Funds	158,287.25
Expenditures Funded with Carry over Title I Funds	
Total Title I Expenditure Data	<hr/> \$158,287.25 <hr/>

Benefits for Staff Relative to Collective Bargaining Agreements

	OBJECT	COVERED	NOT COVERED	TOTAL
10 General Fund	No Self Insurance data to report			
	211 Medical Insurance	1,132,785.71	306,320.22	1,439,105.93
	212 Dental Insurance	43,236.08	10,384.43	53,620.51
	215 Eye Care Insurance	10,806.60	2,891.48	13,698.08
	216 Prescription Insurance			
	271 Self-Insurance Medical Benefits			
	272 Self-Insurance Dental Benefits			
	275 Self-Insurance Eye Care Benefits			
	276 Self-Insurance Prescription Benefits			
	FUND TOTAL	\$1,186,828.39	\$319,596.13	\$1,506,424.52
50 Enterprise Fund	No Self Insurance data to report			
	211 Medical Insurance			
	212 Dental Insurance			
	215 Eye Care Insurance			
	216 Prescription Insurance			
	271 Self-Insurance Medical Benefits			
	272 Self-Insurance Dental Benefits			
	275 Self-Insurance Eye Care Benefits			
	276 Self-Insurance Prescription Benefits			
	FUND TOTAL			
60 Internal Service Fund	No Self Insurance data to report			
	211 Medical Insurance			
	212 Dental Insurance			
	215 Eye Care Insurance			
	216 Prescription Insurance			
	271 Self-Insurance Medical Benefits			
	272 Self-Insurance Dental Benefits			
	275 Self-Insurance Eye Care Benefits			
	276 Self-Insurance Prescription Benefits			
	FUND TOTAL			
Total of All Funds		\$1,186,828.39	\$319,596.13	\$1,506,424.52

LEA : 106169003 Union SD

Printed 11/27/2018 8:26:54 AM

Function	Special Education (Prior Year)	Nonspecial Education (Prior Year)	Total (Prior Year)	Special Education (Current Year)	Nonspecial Education (Current Year)	Total (Current Year)
2120 Guidance Services	40,180.00	171,292.00	211,472.00	41,989.85	179,009.35	220,999.20
2140 Psychological Services	100,793.00	11,199.00	111,992.00	104,006.70	11,556.30	115,563.00
2150 Speech Pathology and Audiology Services	70,130.00		70,130.00	61,716.97		61,716.97
2160 Social Work Services						
2260 Instruction and Curriculum Development Services						
2350 Legal and Accounting Services	1,990.00	31,179.00	33,169.00	1,980.30	31,024.68	33,004.98
2420 Medical Services						
2440 Nursing Services	27,580.00	117,580.00	145,160.00	27,836.71	118,672.29	146,509.00
2700 Student Transportation Services	114,979.00	435,521.00	550,500.00	142,536.25	424,297.75	566,834.00
Total	\$355,652.00	\$766,771.00	\$1,122,423.00	\$380,066.78	\$764,560.37	\$1,144,627.15

(PRINCIPAL AMOUNTS ONLY)

GOVERNMENTAL FUNDS/ ACTIVITIES

	Short-Term Borrowing	General Obligation Bonds/Notes	Authority Building Obligations	Other Long-Term Debt	Other Post-Employment Benefits (OPEB)	Compensated Absences	Net Pension Liability	Total
1. Debt at Beginning of Fiscal Year		2,484,810.00			1,300,681.00	71,925.00	17,593,000.00	21,450,416.00
2. Additional Debt Incurred During Year					297,782.00	1,050.00		298,832.00
3. Retirements and Repayments		298,540.00					258,000.00	556,540.00
4. Debt at End of Fiscal Year		2,186,270.00			1,598,463.00	72,975.00	17,335,000.00	21,192,708.00
5. Accreted Interest at End Of Fiscal Year								
6. Total Debt and Accreted Interest		2,186,270.00			1,598,463.00	72,975.00	17,335,000.00	21,192,708.00
7. Current Portion P&I - Due within 1 year		337,894.00						337,894.00
8. Interest Paid during current fiscal year		40,724.00						40,724.00

(PRINCIPAL AMOUNTS ONLY)

PROPRIETARY FUNDS

- 1. Debt at Beginning of Fiscal Year
- 2. Additional Debt Incurred During Year
- 3. Retirements and Repayments
- 4. Debt at End of Fiscal Year
- 5. Accreted Interest at End Of Fiscal Year
- 6. Total Debt and Accreted Interest
- 7. Current Portion P&I - Due within 1 year
- 8. Interest Paid during current fiscal year

Total Principal and Interest Payments Made by Your School - All Funds

Function	Fund		Principal (910)	Principal (920)	Interest (830)	Total (Principal +Interest)	Misc Other Uses (990)
5110	10	General Fund	298,540.00		40,723.77	339,263.77	
5110	20	Special Revenue Funds					
5110	30	Capital Projects Funds					
5110	40	Debt Service Fund					
5110	90	Permanent Fund					
5120	10	General Fund					
5120	20	Special Revenue Funds					
5120	30	Capital Projects Funds					
5120	40	Debt Service Fund					

Total Debt Payments - Governmental Funds			\$298,540.00		\$40,723.77	\$339,263.77	
---	--	--	---------------------	--	--------------------	---------------------	--

Function	Fund		Principal (910)	Principal (920)	Interest (830)	Total (Principal +Interest)
5110	50	Enterprise Fund				
5110	60	Internal Service Fund				
5120	50	Enterprise Fund				
5120	60	Internal Service Fund				

Total Debt Payments - Proprietary Funds						
--	--	--	--	--	--	--

Debt Details
Governmental Funds/ Activities

Debt Category	Debt Issue Date (MM/YYYY)	Principal Amounts Only			Debt at End of Fiscal Year	Current Portion Due Within One Year (Principal and Interest)	Interest Paid During Fiscal Year
		Debt at Beginning of Fiscal Year	Additions	Reductions / Repayments			
General Obligation Bonds/Notes – CIB	06/2016	2,484,810.00		298,540.00	2,186,270.00	337,894.00	40,724.00
Compensated Absences		71,925.00	1,050.00		72,975.00		
Other Post-Employment Benefits (OPEB)		1,300,681.00	297,782.00		1,598,463.00		
Net Pension Liability		17,593,000.00		258,000.00	17,335,000.00		
Totals for Debt Entered:		\$21,450,416.00	\$298,832.00	\$556,540.00	\$21,192,708.00	\$337,894.00	\$40,724.00

General Fund (10)

Section 1: Tuition/Purchased Services as Reported within Expenditure Detail

	Amount
Tuition Reported in General Fund Expenditures 1000-560	822,087.21
Purchased Services in General Fund Expenditures 1000-594 and 1000-597	

Section 1 Total	\$822,087.21
------------------------	---------------------

Section 2: Tuition Paid to Institution Types During Fiscal Year

	Tuition Paid For Nonspecial Education	Tuition Paid For Special Education	Total
1 1306 Institutions			
2 Institutionalized Children's Programs			
3 Juveniles Incarcerated in Adult Facilities			
4 Residential Treatment Facilities			
5 Other Local Education Agencies	5,704.20		5,704.20
6 Brick and Mortar Charter Schools			
7 Cyber Charter Schools	285,870.59	111,557.07	397,427.66
8 Career and Technology Centers	228,838.00		228,838.00
9 Approved Private Schools			
10 PA Chartered Schools for the Deaf and Blind			
11 Private Residential Rehabilitative Institutions		14,753.93	14,753.93
12 Juvenile Detention Centers			
13 Special Program Jointures			
14 Other Tuition Not Included Elsewhere In This Section	8,786.01	166,577.41	175,363.42
Section 2 Total	\$529,198.80	\$292,888.41	\$822,087.21

LEA : 106169003 Union SD

Printed 11/27/2018 8:26:57 AM

Food Service / Cafeteria Operations Fund (51)

3000 Operation of Non-Instructional Services

Total

100 Personnel Services – Salaries

100 Personnel Services – Salaries 180,951.00

Total Personnel Services – Salaries \$180,951.00

200 Personnel Services – Employee Benefits

210 Group Insurance – Contracted Provider 87,512.30

220 Social Security Contributions 6,923.49

230 PSERS Retirement Contributions 29,315.24

250 Unemployment Compensation 73.61

260 Workers' Compensation 72.36

Total Personnel Services – Employee Benefits \$123,897.00

400 Purchased Property Services

430 Repairs and Maintenance Services 10,123.00

Total Purchased Property Services \$10,123.00

500 Other Purchased Services

580 Travel 4,404.00

Total Other Purchased Services \$4,404.00

600 Supplies

610 General Supplies 153,128.00

Total Supplies \$153,128.00

700 Property

740 Depreciation 6,704.00

Total Property \$6,704.00

Total 3000 Operation of Non-Instructional Services \$479,207.00

Food Service / Cafeteria Operations Fund (51)

3100 Food Services

	<u>Elementary</u>	<u>Secondary</u>	<u>Federal</u>	<u>Total</u>
100 Personnel Services – Salaries				
100 Personnel Services – Salaries			63,322.80	180,951.00
Total Personnel Services – Salaries			\$63,322.80	\$180,951.00
200 Personnel Services – Employee Benefits				
210 Group Insurance – Contracted Provider				87,512.30
220 Social Security Contributions				6,923.49
230 PSERS Retirement Contributions				29,315.24
250 Unemployment Compensation				73.61
260 Workers' Compensation				72.36
Total Personnel Services – Employee Benefits				\$123,897.00
400 Purchased Property Services				
430 Repairs and Maintenance Services				10,123.00
Total Purchased Property Services				\$10,123.00
500 Other Purchased Services				
580 Travel				4,404.00
Total Other Purchased Services				\$4,404.00
600 Supplies				
610 General Supplies			143,264.90	153,128.00
Total Supplies			\$143,264.90	\$153,128.00
700 Property				
740 Depreciation				6,704.00
Total Property				\$6,704.00
Total 3100 Food Services			\$206,587.70	\$479,207.00

	<u>Food Service(51)</u>	<u>Child Care Operations(52)</u>	<u>Other Enterprise(58)</u>	<u>Internal Service(60)</u>	<u>Total</u>
3000 <u>Operation of Non-Instructional Services</u>					
3100 Food Services	479,207.00				479,207.00
Total Operation of Non-Instructional Services	\$479,207.00				\$479,207.00
TOTAL ACTUAL EXPENDITURES & OTHER FINANCING USES	\$479,207.00				\$479,207.00